

### 36-3538: Anti-CD20 / MS4A1 (B-Cell Marker) Monoclonal Antibody(Clone: B9E9)

<b>Clonality :</b>	Monoclonal
<b>Clone Name :</b>	B9E9
<b>Application :</b>	Functional Assay,FACS,IF
<b>Reactivity :</b>	Human
<b>Gene :</b>	MS4A1
<b>Gene ID :</b>	931
<b>Uniprot ID :</b>	P11836
<b>Alternative Name :</b>	APY; ATOPY; B-lymphocyte antigen CD20; B-lymphocyte cell-surface antigen B1; Bp35; Fc epsilon receptor I beta chain; Fc Fragment of IgE high affinity I receptor for beta polypeptide; FCER1B; High affinity immunoglobulin epsilon receptor subunit beta; IgE Fc receptor subunit beta; IGEL; IGER; IGHER; LEU16; Leukocyte surface antigen Leu-16; Ly44; Membrane spanning 4 domains subfamily A member 2; Membrane-spanning 4-domains subfamily A member 1 (MS4A1)
<b>Isotype :</b>	Mouse IgG2a, kappa
<b>Immunogen Information :</b>	Lymphoblastoid cell line Daudi

#### Description

Recognizes a protein of 33-37kDa, identified as CD20 (Workshop V; Code CD20.12). B9E9 recognizes extracellular domain of CD20. The epitope is similar to or identical to that recognized by other CD20 antibodies including Leu-16 and B1. This MAb can be used for immunophenotyping of leukemia and malignant cells, B lymphocyte detection in peripheral blood, B cell localization in tissues and B lymphocyte purification by immunosorbent methods. CD20 is a non-Ig differentiation antigen of B-cells and its expression is restricted to normal and neoplastic B-cells, being absent from all other leukocytes and tissues. CD20 is expressed by pre B-cells and persists during all stages of B-cell maturation but is lost upon terminal differentiation into plasma cells. Protein passes through the membrane 4 times with both ends in cytoplasm and exposes one short and one longer loop to the external environment. CD20 is not glycosylated in resting B cells and its cytoplasmic domains are differentially phosphorylated upon activation. It acts as a calcium channel involved in B-cell activation and cell cycle progression.

#### Product Info

<b>Amount :</b>	20 µg / 100 µg
<b>Content :</b>	200 µg/ml of Ab Purified from Bioreactor Concentrate by Protein A/G. Prepared in 10mM PBS with 0.05% BSA & 0.05% azide. Also available WITHOUT BSA & azide at 1.0mg/ml.
<b>Storage condition :</b>	Antibody with azide - store at 2 to 8°C. Antibody without azide - store at -20 to -80°C. Antibody is stable for 24 months. Non-hazardous.

#### Application Note

Functional Studies (Order Ab without BSA & Azide); Flow Cytometry (1-2ug/million cells); Immunofluorescence (1-2ug/ml);

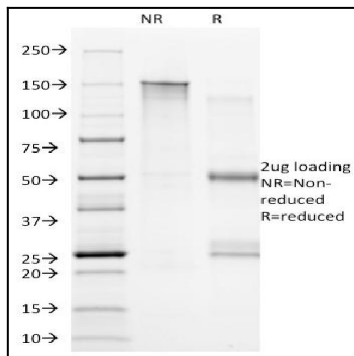


Fig. 1: SDS-PAGE Analysis Purified CD20 Mouse Monoclonal Antibody (B9E9).  
Confirmation of Integrity and Purity of Antibody.