

36-3541: Anti-CD20/ MS4A1 (B-Cell Marker) Monoclonal Antibody(Clone: MS4A1/3411)

Clonality :	Monoclonal
Clone Name :	MS4A1/3411
Application :	ELISA,WB,FACS,IF,IHC
Reactivity :	Human
Gene :	MS4A1
Gene ID :	931
Uniprot ID :	P11836
Alternative Name :	APY; ATOPY; B-lymphocyte cell-surface antigen B1; Bp35; Fc epsilon receptor I beta chain; Fc Fragment of IgE high affinity I receptor for beta polypeptide; FCER1B; High affinity immunoglobulin epsilon receptor subunit beta; IgE Fc receptor subunit beta; IGEL; IGER; IGHER; LEU16; Leukocyte surface antigen Leu-16; Ly44; Membrane spanning 4 domains subfamily A member 2; Membrane-spanning 4-domains subfamily A member 1 (MS4A1)
Isotype :	Mouse IgG2b, kappa
Immunogen Information :	A recombinant fragment (around aa 213-297) of human MS4A1 protein (exact sequence is proprietary)

Description

Recognizes a protein of 30-33kDa, which is identified as CD20. It is a non-Ig differentiation antigen of B-cells and its expression is restricted to normal and neoplastic B-cells, being absent from all other leukocytes and tissues. CD20 is expressed by pre-B-cells and persists during all stages of B-cell maturation but is lost upon terminal differentiation into plasma cells. This MAb can be used for immunophenotyping of leukemia and malignant cells, B lymphocyte detection in peripheral blood and B cell localization in tissues. It reacts with the majority of B-cells present in peripheral blood and lymphoid tissues and their derived lymphomas. In lymphoid tissue, germinal center blasts and B-immunoblasts are particularly reactive. It is a reliable antibody for ascribing a B-cell phenotype in known lymphoid tissues. Rarely, CD20-positive T-cell lymphomas have been reported. Reactivity has also been noted with Reed-Sternberg cells in cases of Hodgkin s disease, particularly of lymphocyte predominant type.

Product Info

Amount :	20 µg / 100 µg
Content :	200 µg/ml of recombinant MAb Purified by Protein A/G. Prepared in 10mM PBS with 0.05% BSA & 0.05% azide. Also available WITHOUT BSA & azide at 1.0mg/ml.
Storage condition :	Antibody with azide - store at 2 to 8°C. Antibody without azide - store at -20 to -80°C. Antibody is stable for 24 months. Non-hazardous.

Application Note

ELISA (Use Ab at 2-4ug/ml for coating) (Order Ab without BSA); Western Blot (1-2ug/ml); Flow Cytometry (1-2ug/million cells); Immunofluorescence (1-2ug/ml); Immunohistochemistry (Formalin-fixed) (1-2ug/ml for 30 minutes at RT),(Staining of formalin-fixed tissues requires heating tissue sections in 10mM Tris with 1mM EDTA, pH 9.0, for 45 min at 95°C followed by cooling at RT for 20 minutes);

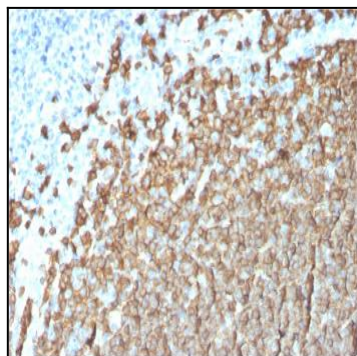


Fig. 1: Formalin-fixed, paraffin-embedded human Tonsil stained with CD20 Mouse Monoclonal Antibody (MS4A1/3411).

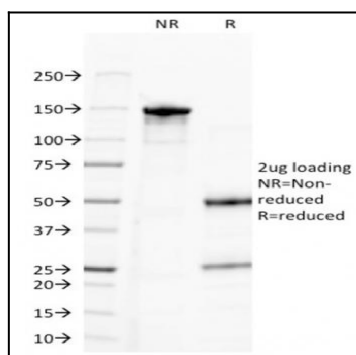


Fig. 2: SDS-PAGE Analysis Purified CD20 Mouse Monoclonal Antibody (MS4A1/3411). Confirmation of Purity and Integrity of Antibody.

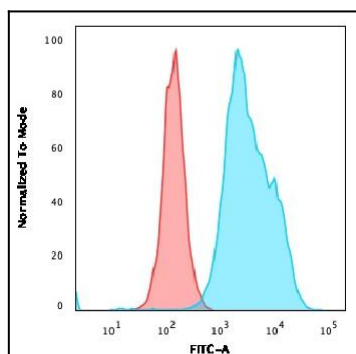


Fig. 3: Flow Cytometric Analysis of Raji cells. CD20 Mouse Monoclonal Antibody (MS4A1/3411) followed by goat anti-Mouse IgG-CF488 (Blue); Isotype Control (Red).

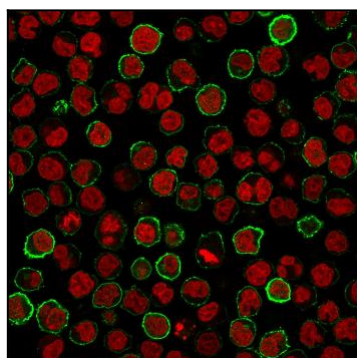


Fig. 4: Immunofluorescence staining of Raji cells using CD20 Mouse Monoclonal Antibody (MS4A1/3411) followed by goat anti-Mouse IgG conjugated to CF488 (green). Nuclei are stained with Reddot.

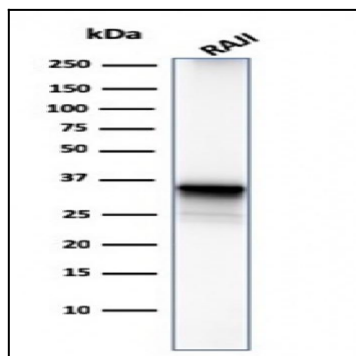


Fig. 5: Western Blot Analysis of Raji cell lysate using CD20 Mouse Monoclonal Antibody (MS4A1/3411).