

36-3546: Anti-CD20 / MS4A1 (B-Cell Marker) Monoclonal Antibody(Clone: IGEL/1497R)

Clonality :	Monoclonal
Clone Name :	IGEL/1497R
Application :	FACS,IHC
Reactivity :	Human
Gene :	MS4A1
Gene ID :	931
Uniprot ID :	P11836
Alternative Name :	APY; ATOPY; B-lymphocyte cell-surface antigen B1; Bp35; Fc epsilon receptor I beta chain; Fc Fragment of IgE high affinity I receptor for beta polypeptide; FCER1B; High affinity immunoglobulin epsilon receptor subunit beta; IgE Fc receptor subunit beta; IGEL; IGER; IGHER; LEU16; Leukocyte surface antigen Leu-16; Ly44; MS4A1; MS4A2
Isotype :	Rabbit IgG
Immunogen Information :	Recombinant human full-length MS4A1 protein

Description

Recognizes a protein of 30-33kDa, which is identified as CD20. It is a non-Ig differentiation antigen of B-cells and its expression is restricted to normal and neoplastic B-cells, being absent from all other leukocytes and tissues. CD20 is expressed by pre B-cells and persists during all stages of B-cell maturation but is lost upon terminal differentiation into plasma cells. This MAb can be used for immunophenotyping of leukemia and malignant cells, B lymphocyte detection in peripheral blood and B cell localization in tissues. It reacts with the majority of B-cells present in peripheral blood and lymphoid tissues and their derived lymphomas. In lymphoid tissue, germinal center blasts and B-immunoblasts are particularly reactive. It is a reliable antibody for ascribing a B-cell phenotype in known lymphoid tissues. Rarely, CD20-positive T-cell lymphomas have been reported. Reactivity has also been noted with Reed-Sternberg cells in cases of Hodgkin's disease, particularly of lymphocyte predominant type.

Product Info

Amount :	20 µg / 100 µg
Content :	200 µg/ml of Ab Purified by Protein A Column. Prepared in 10mM PBS with 0.05% BSA & 0.05% azide. Also available WITHOUT BSA & azide at 1.0mg/ml.
Storage condition :	Antibody with azide - store at 2 to 8°C. Antibody without azide - store at -20 to -80°C. Antibody is stable for 24 months. Non-hazardous.

Application Note

Flow Cytometry (1-2ug/million cells); Immunohistochemistry (Formalin-fixed) (1-2ug/ml for 30 minutes at RT)(Staining of formalin-fixed tissues requires heating tissue sections in 10mM Tris with 1mM EDTA, pH 9.0, for 45 min at 95°C followed by cooling at RT for 20 minutes);

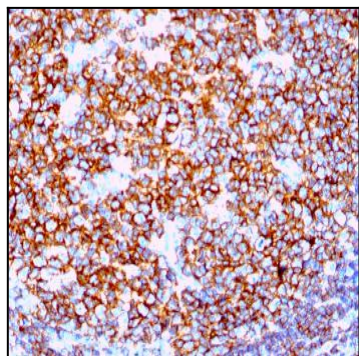


Fig. 1: Formalin-fixed, paraffin-embedded human Tonsil stained with CD20 Rabbit Recombinant Monoclonal Antibody (IGEL/1497R).

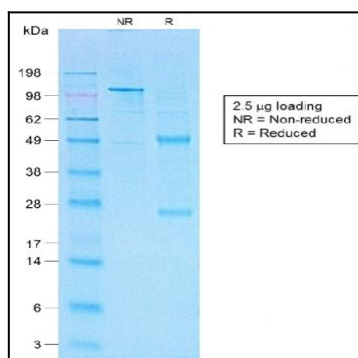


Fig. 2: SDS-PAGE Analysis of Purified CD20 Rabbit Recombinant Monoclonal Antibody (IGEL/1497R). Confirmation of Purity and Integrity of Antibody.

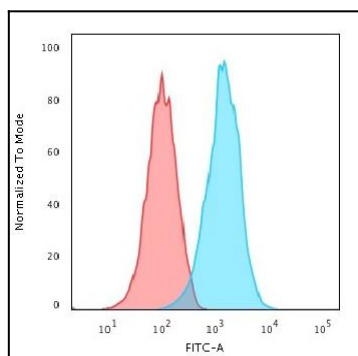


Fig. 3: Flow Cytometric Analysis of Raji cells. CD20 Rabbit Recombinant Monoclonal Antibody (IGEL/1497R) followed by Goat anti-Mouse IgG-CF488 (Blue); Isotype Control (Red).