

36-3581: Anti-CD30 / TNFRSF8 (Hodgkin & Reed-Sternberg Cell Marker) Monoclonal Antibody(Clone: Ki-1/1505R)

| | |
|--------------------------------|---|
| Clonality : | Monoclonal |
| Clone Name : | Ki-1/1505R |
| Application : | IHC |
| Reactivity : | Human |
| Gene : | TNFRSF8 |
| Gene ID : | 943 |
| Uniprot ID : | P28908 |
| Alternative Name : | CD30L receptor, Cytokine receptor CD30, Ki-1 antigen, Lymphocyte activation antigen CD30, Tumor necrosis factor receptor superfamily member 8 (TNFRSF8) |
| Isotype : | Rabbit IgG |
| Immunogen Information : | Recombinant human full-length TNFRSF8 protein |

Description

Recognizes a single chain glycoprotein of 105/120kDa, identified as CD30/Ki-1. CD30 is synthesized as a 90kDa precursor, which is processed in the Golgi complex into a membrane-bound phosphorylated mature 105/120kDa glycoprotein. In Hodgkin's disease, CD30/Ki-1 antigen is expressed by mononuclear-Hodgkin and multinucleated Reed-Sternberg cells. It is also expressed by the tumor cells of a majority of anaplastic large cell lymphomas as well as by a varying proportion of activated T and B cells. This MAb distinguishes large cell lymphomas derived from activated lymphoid cells from histiocytic malignancies and lymphomas derived from resting and precursor lymphoid cells or from anaplastic carcinomas. About one third of the Ki-1 positive lymphomas lack the leukocyte common antigen (CD45).

Product Info

| | |
|----------------------------|--|
| Amount : | 20 µg / 100 µg |
| Content : | 200 µg/ml of Ab Purified by Protein A Column. Prepared in 10mM PBS with 0.05% BSA & 0.05% azide. Also available WITHOUT BSA & azide at 1.0mg/ml. |
| Storage condition : | Antibody with azide - store at 2 to 8°C. Antibody without azide - store at -20 to -80°C. Antibody is stable for 24 months. Non-hazardous. |

Application Note

Immunohistochemistry (Formalin-fixed) (1-2ug/ml for 30 minutes at RT)(Staining of formalin-fixed tissues requires heating tissue sections in 10mM Tris with 1mM EDTA, pH 8.0, for 45 min at 95°C followed by cooling at RT for 20 minutes)

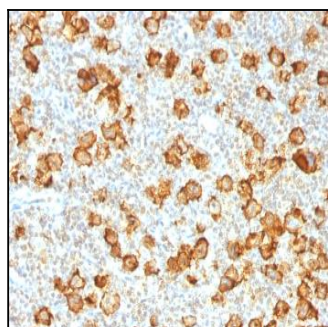


Fig. 1: Formalin-fixed, paraffin-embedded human Hodgkin's Lymphoma stained with CD30 Rabbit Recombinant Monoclonal Antibody (Ki-1/1505R).

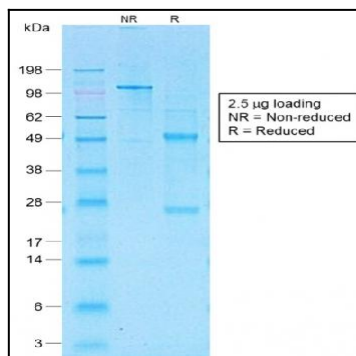


Fig. 2: SDS-PAGE Analysis of Purified CD30 Rabbit Recombinant Monoclonal Antibody (Ki-1/1505R).