

36-3641: Anti-CD63 (Late Endosomes Marker) Monoclonal Antibody(Clone: LAMP3/2990R)

Clonality :	Monoclonal
Clone Name :	LAMP3/2990R
Application :	FACS,IHC
Reactivity :	Human
Gene :	CD63
Gene ID :	967
Uniprot ID :	P08962
Alternative Name :	gp55; granulophysin; Lysosomal-associated membrane protein 3 (LAMP-3); Mast cell antigen AD1; melanoma 1 antigen; Melanoma-associated antigen MLA1; Melanoma-associated antigen ME491; MLA1; NGA; Ocular melanoma-associated antigen; OMA81H; PTLGP40; Tetraspanin-30; TSPAN30
Isotype :	Rabbit IgG
Immunogen Information :	Recombinant human full-length CD63 protein

Description

This MAb recognizes protein of 26kDa-60kDa, which is identified as CD63. Its epitope is different from that of MAb LAMP3/529. The tetraspanins are integral membrane proteins expressed on cell surface and granular membranes of hematopoietic cells and are components of multi-molecular complexes with specific integrins. The tetraspanin CD63 is a lysosomal membrane glycoprotein that translocates to the plasma membrane after platelet activation. CD63 is expressed on activated platelets, monocytes and macrophages, and is weakly expressed on granulocytes, T cell and B cells. It is located on the basophilic granule membranes and on the plasma membranes of lymphocytes and granulocytes. CD63 is a member of the TM4 superfamily of leukocyte glycoproteins that includes CD9, CD37 and CD53, which contain four transmembrane regions. CD63 may play a role in phagocytic and intracellular lysosome-phagosome fusion events. CD63 deficiency is associated with Hermansky-Pudlak syndrome and is strongly expressed during the early stages of melanoma progression.

Product Info

Amount :	20 µg / 100 µg
Content :	200 µg/ml of Ab Purified from Bioreactor Concentrate by Protein A/G. Prepared in 10mM PBS with 0.05% BSA & 0.05% azide. Also available WITHOUT BSA & azide at 1.0mg/ml.
Storage condition :	Antibody with azide - store at 2 to 8°C. Antibody without azide - store at -20 to -80°C. Antibody is stable for 24 months. Non-hazardous.

Application Note

Flow Cytometry (1-2ug/million cells); Immunohistochemistry (Formalin-fixed) (1-2ug/ml for 30 minutes at RT),(Staining of formalin-fixed tissues is enhanced by heating tissue sections in 10mM Tris with 1mM EDTA, pH 9.0 for 45 min at 95°C followed by cooling at RT for 20 minutes),

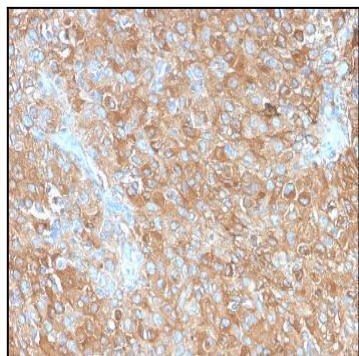


Fig. 1: Formalin-fixed, paraffin-embedded human Prostate Carcinoma stained with CD63 Rabbit Recombinant Monoclonal Antibody (LAMP3/2990R).

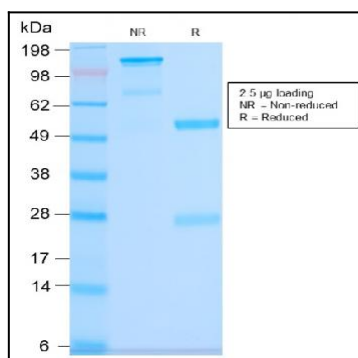


Fig. 2: SDS-PAGE Analysis Purified CD63 Rabbit Recombinant Monoclonal Antibody (LAMP3/2990R). Confirmation of Purity and Integrity of Antibody.

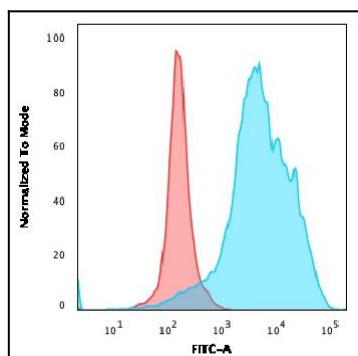


Fig. 3: Flow Cytometric Analysis of PFA-fixed U87MG cells. CD63 Rabbit Recombinant Monoclonal Antibody (LAMP3/2990R) followed by goat anti-rabbit IgG-CF488 (Blue); Isotype Control (Red).