



36-3648: Anti-CD68 (Macrophage Marker) Monoclonal Antibody(Clone: C68/2908R)

Clonality :	Monoclonal
Clone Name :	C68/2908R
Application :	WB,IHC
Reactivity :	Human
Gene :	CD68
Gene ID :	968
Uniprot ID :	P34810
Alternative Name :	GP110, LAMP4, Microsialin, Macrosialin, SCARD1, Scavenger Receptor Class D Member-1
Isotype :	Rabbit IgG
Immunogen Information :	Recombinant full-length human LAMP4 / CD68 protein

Description

This antibody recognizes a glycoprotein of 110kDa, which is identified as CD68. It is important for identifying macrophages in tissue sections. It stains macrophages in a wide variety of human tissues, including Kupffer cells and macrophages in the red pulp of the spleen, in lamina propria of the gut, in lung alveoli, and in bone marrow. It reacts with myeloid precursors and peripheral blood granulocytes. It also reacts with plasmacytoid T cells, which are supposed to be of monocyte/macrophage origin. It shows strong granular cytoplasmic staining of chronic and acute myeloid leukemia and also reacts with rare cases of true histiocytic neoplasia. Lymphomas are negative or show few granules.

Product Info

Amount :	20 µg / 100 µg
Content :	200 µg/ml of Ab Purified from Bioreactor Concentrate by Protein A/G. Prepared in 10mM PBS with 0.05% BSA & 0.05% azide. Also available WITHOUT BSA & azide at 1.0mg/ml.
Storage condition :	Antibody with azide - store at 2 to 8°C. Antibody without azide - store at -20 to -80°C. Antibody is stable for 24 months. Non-hazardous.

Application Note

Western Blot (1-2ug/ml);,Immunohistochemistry (Formalin-fixed) (1-2ug/ml for 30 minutes at RT),(Staining of formalin-fixed tissues requires heating tissue sections in 10mM Tris with 1mM EDTA, pH 9.0, for 45 min at 95°C followed by cooling at RT for 20 minutes);

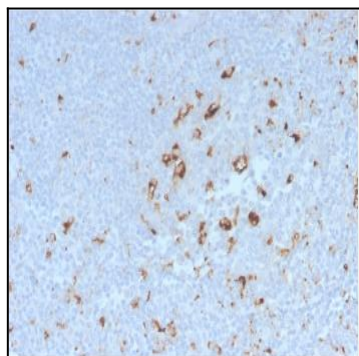


Fig. 1: Formalin-fixed, paraffin-embedded human Tonsil stained with CD68 Rabbit Recombinant Monoclonal Antibody (C68/2908R).

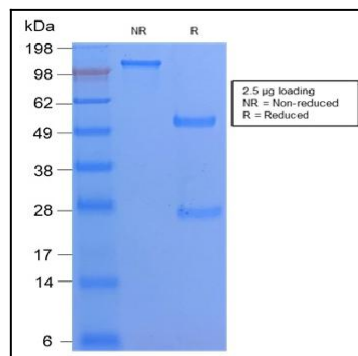


Fig. 2: SDS-PAGE Analysis Purified CD68 Rabbit Recombinant Monoclonal Antibody (C68/2908R). Confirmation of Purity and Integrity of Antibody.

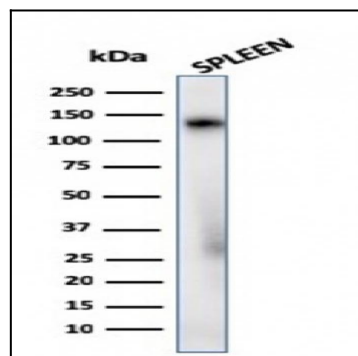


Fig. 3: Western Blot Analysis of human Spleen tissue lysate using CD68 Rabbit Recombinant Monoclonal Antibody (C68/2908R).