

### 36-3668: Anti-Cdk1 / p34cdc2 Monoclonal Antibody(Clone: CDK1/873)

<b>Clonality :</b>	Monoclonal
<b>Clone Name :</b>	CDK1/873
<b>Application :</b>	IHC
<b>Reactivity :</b>	Human
<b>Gene :</b>	CDC2
<b>Gene ID :</b>	983
<b>Uniprot ID :</b>	P06493
<b>Alternative Name :</b>	Cdc2, CDC28A, CDK1, CDKN1, CELL CYCLE CONTROLLER CDC2, Cell division control protein 2 homolog, Cell division cycle 2 G1 to S and G2 to M, Cell division protein kinase 1, Cyclin-dependent kinase 1, p34 Protein Kinase, P34CDC2
<b>Isotype :</b>	Mouse IgG2a, kappa
<b>Immunogen Information :</b>	Recombinant human full-length CDK1 protein.

#### Description

Recognizes a 34kDa protein, which is identified as cyclin dependent kinase 1 (cdk1) or p34cdc2 protein kinase. cdk1 / p34cdc2 plays a crucial role during cell division and is most active during mitosis. It is predominantly localized in the nucleus. It is a serine/threonine kinase, which is activated by cyclin, presumably by de-phosphorylation of tyrosine residues. Activated cdk1 / p34cdc2 performs specific functions during mitosis, including nuclear envelope breakdown and chromosome condensation.

#### Product Info

<b>Amount :</b>	20 µg / 100 µg
<b>Content :</b>	200 µg/ml of Ab Purified from Bioreactor Concentrate by Protein A/G. Prepared in 10mM PBS with 0.05% BSA & 0.05% azide. Also available WITHOUT BSA & azide at 1.0mg/ml.
<b>Storage condition :</b>	Antibody with azide - store at 2 to 8°C. Antibody without azide - store at -20 to -80°C. Antibody is stable for 24 months. Non-hazardous.

#### Application Note

Immunohistochemistry (Formalin-fixed) (2-4ug/ml for 30 minutes at RT)(Staining of formalin-fixed tissues requires heating tissue sections in 10mM Tris with 1mM EDTA, pH 9.0, for 45 min at 95&degC followed by cooling at RT for 20 minutes);

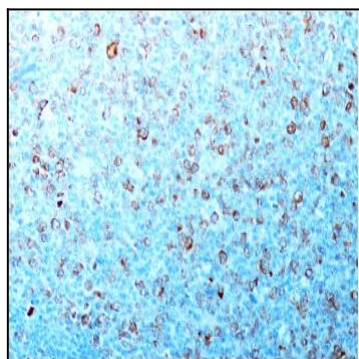


Fig. 1: Formalin-fixed, paraffin-embedded human Tonsil stained with Cdk1 Mouse Monoclonal Antibody (CDK1/873).

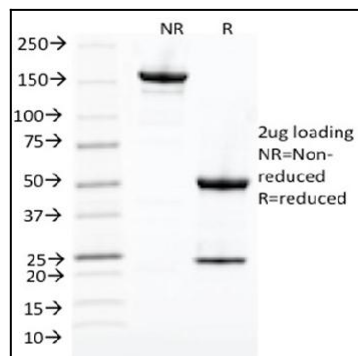


Fig. 2: SDS-PAGE Analysis Purified Cdk1 Mouse Monoclonal Antibody (CDK1/873). Confirmation of Integrity and Purity of Antibody.

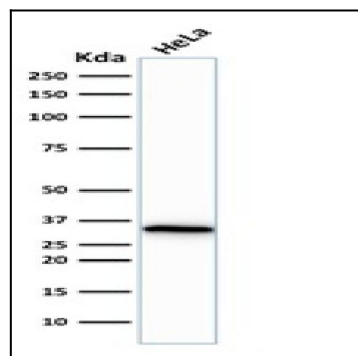


Fig. 3: Western Blot Analysis of human HeLa cell lysate using Cdk1 Mouse Monoclonal Antibody (CDK1/873).