

36-3680: Anti-E-Cadherin / CD324 (Intercellular Junction Marker) Monoclonal Antibody(Clone: SPM471)

Clonality :	Monoclonal
Clone Name :	SPM471
Application :	FACS,IF,WB,IHC
Reactivity :	Human
Gene :	CDH1
Gene ID :	999
Uniprot ID :	P12830
Alternative Name :	Arc 1; cadherin 1 type 1 E-cadherin; Cadherin1; CAM 120/80; CD324; CDH1; CDHE; E-Cad/CTF3; E-cadherin; ECAD; Epithelial cadherin; epithelial calcium dependent adhesion protein; Liver cell adhesion molecule (LCAM); Uvomorulin (UVO)
Isotype :	Mouse IgG1, kappa
Immunogen Information :	Recombinant human E-Cadherin protein

Description

Recognizes a protein of 120-80kDa, identified as E-cadherin. Cadherins comprise a family of Ca²⁺-dependent adhesion molecules that function to mediate cell-cell binding critical to the maintenance of tissue structure and morphogenesis. The classical cadherins, E-, N- and P-cadherin, consist of large extracellular domains characterized by a series of five homologous NH₂ terminal repeats. The relatively short intracellular domains interact with a variety of cytoplasmic proteins, such as -catenin, to regulate cadherin function. E-cadherin plays an important role in epithelial cell adhesion. A decreased expression of E-cadherin is associated with metastatic potential and poor prognosis in breast cancer, prostate and esophageal cancer. In combination with p120 Catenin, it is useful for the differentiation between ductal (E-cadherin +) and lobular (E-cadherin -) breast carcinomas. It may also help in diagnosis of mesothelioma.

Product Info

Amount :	20 µg / 100 µg
Content :	200 µg/ml of Ab Purified from Bioreactor Concentrate by Protein A/G. Prepared in 10mM PBS with 0.05% BSA & 0.05% azide. Also available WITHOUT BSA & azide at 1.0mg/ml.
Storage condition :	Antibody with azide - store at 2 to 8°C. Antibody without azide - store at -20 to -80°C. Antibody is stable for 24 months. Non-hazardous.

Application Note

Flow Cytometry (1-2ug/million cells); Immunofluorescence (1-2ug/ml); Western Blot (1-2ug/ml); ,Immunohistochemistry (Formalin-fixed) (1-2ug/ml for 30 minutes at RT),(Staining of formalin-fixed tissues requires heating tissue sections in 10mM Tris with 1mM EDTA, pH 9.0, for 45 min at 95 °C followed by cooling at RT for 20 minutes),

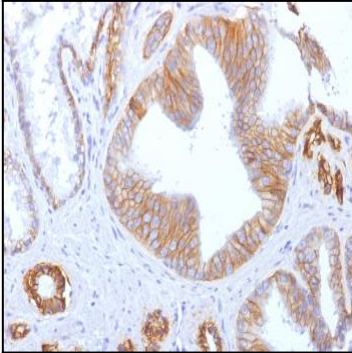


Fig. 1: Formalin-fixed, paraffin-embedded human Prostate Carcinoma stained with E-Cadherin Monoclonal Antibody (SPM471)

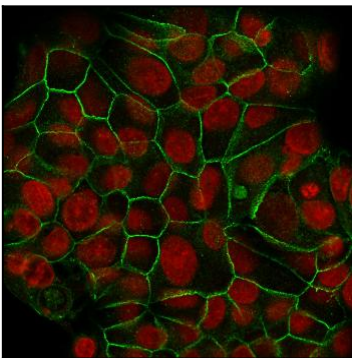


Fig. 2: Confocal Immunofluorescence of MCF-7 cells E-Cadherin Monoclonal Antibody (SPM471). labeled with CF488 (Green); Reddot is used to label the nuclei.