

36-3696: Anti-Erythrocyte Specific Monoclonal Antibody(Clone: SFL23.6)

| | |
|--------------------------------|--|
| Clonality : | Monoclonal |
| Clone Name : | SFL23.6 |
| Application : | FACS,IF |
| Reactivity : | Human |
| Alternative Name : | RBC, Red blood cells, Erythroid Marker, Erythrocyte specific protein |
| Isotype : | Mouse IgG2b, kappa |
| Immunogen Information : | Hepatocytes from a 20-22 week-old human fetus |

Description

Mouse Anti-Human Erythrocytes Clone SFL23.6 MAb is directed against an erythroid cell surface antigen. It shows a well-defined reactivity with cells of the erythroid lineage at all stages of maturation in the peripheral blood, bone marrow, and fetal liver. Non-erythroid lineages are negative by flow cytometry. Although the exact identity of the antigen has yet to be determined, it has been shown to be distinct from Glycophorin A. This MAb is useful in the diagnosis of erythroleukemia, identification of bone marrow erythroid precursors, gating erythroid nucleated precursor cells from malignant cells in bone marrow specimens.

Product Info

| | |
|----------------------------|---|
| Amount : | 20 µg / 100 µg |
| Content : | 200 µg/ml of Ab Purified from Bioreactor Concentrate by Protein A/G. Prepared in 10mM PBS with 0.05% BSA & 0.05% azide. Also available WITHOUT BSA & azide at 1.0mg/ml. |
| Storage condition : | Antibody with azide - store at 2 to 8°C. Antibody without azide - store at -20 to -80°C. Antibody is stable for 24 months. Non-hazardous. |

Application Note

Flow Cytometry (1-2ug/million cells); Immunofluorescence (1-2ug/ml);

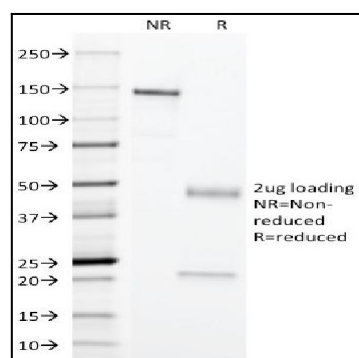


Fig. 1: SDS-PAGE Analysis Purified Erythrocyte Specific Mouse Monoclonal Antibody (SFL23.6). Confirmation of Purity and Integrity of Antibody.