

## 36-3720: Anti-Proliferation Marker Monoclonal Antibody(Clone: JC1)

<b>Clonality :</b>	Monoclonal
<b>Clone Name :</b>	JC1
<b>Application :</b>	WB,IF,IHC
<b>Reactivity :</b>	Human
<b>Isotype :</b>	Mouse IgG2a, kappa
<b>Immunogen Information :</b>	Pokeweed-stimulated lymphocytes

### Description

JC1 detects a nuclear antigen, distinct from Ki67, present in proliferating cells. It is useful as a marker of proliferation in cases such as squamous cell carcinoma where the Ki67 index cannot be determined.

### Product Info

<b>Amount :</b>	20 µg / 100 µg
<b>Content :</b>	200 µg/ml of Ab Purified from Bioreactor Concentrate by Protein A/G. Prepared in 10mM PBS with 0.05% BSA & 0.05% azide. Also available WITHOUT BSA & azide at 1.0mg/ml.
<b>Storage condition :</b>	Antibody with azide - store at 2 to 8°C. Antibody without azide - store at -20 to -80°C. Antibody is stable for 24 months. Non-hazardous.

### Application Note

Western Blot (1-2ug/ml); Immunofluorescence (1-2ug/ml); ,Immunohistochemistry (Formalin-fixed) (1-2ug/ml for 30 min at RT),(Staining of formalin-fixed tissues requires heating tissue sections in 10mM Tris with 1mM EDTA, pH 9.0, for 45 min at 95&degC followed by cooling at RT for 20 minutes);

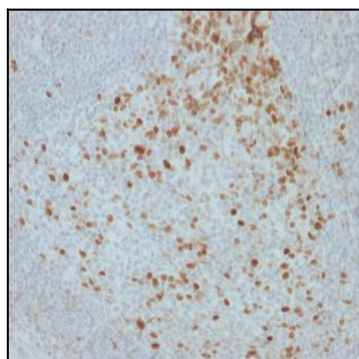


Fig. 1: Formalin-fixed, paraffin-embedded human Lymph Node stained with Proliferation Marker Mouse Monoclonal Antibody (JC1).

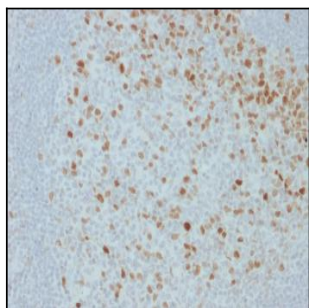


Fig. 2: Formalin-fixed, paraffin-embedded human Lymph Node stained with Proliferation Marker Mouse Monoclonal Antibody (JC1).