

36-3724: Anti-Bromodeoxyuridine (BrdU) (Proliferation Marker) Monoclonal Antibody(Clone: BRD469)-CF488

Clonality :	Monoclonal
Clone Name :	BRD469
Application :	FACS,IF
Reactivity :	All species
Conjugate :	CF488
Alternative Name :	Bromodeoxyuridine, BUdr
Isotype :	Mouse IgG1, kappa
Immunogen Information :	Bromodeoxyuridine (BrdU) conjugated to KLH

Description

It reacts with Bromodeoxyuridine (BrdU) in single stranded DNA (produced by partial denaturation of double stranded DNA), BrdU coupled to a protein carrier, as well as free BrdU. BrdU is a thymidine analog, incorporated into cell nuclei during DNA synthesis prior to mitosis. Antibody to BrdU is helpful in detecting S-phase cells, providing useful information on the aggressiveness of tumors.

Product Info

Amount :	0.5 ml at 100µg/ml
Content :	Antibody Purified from Bioreactor Concentrate by Protein A/G and conjugated to various reporter molecules. Prepared in 10mM PBS with 0.05% BSA and 0.05% azide. Contact us if you require this Ab in a different format.
Storage condition :	Antibody with azide - store at 4 to 8°C. Antibody is stable for 24 months. Non-hazardous.

Application Note

Flow Cytometry (5ul per test per one million cells or 5ul per 100ul of whole blood);Immunofluorescence (1:50-1:100);

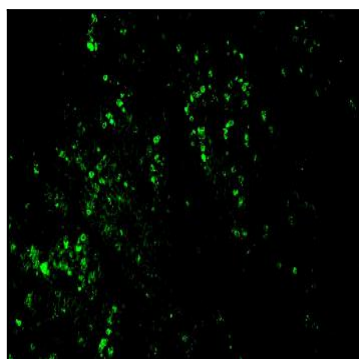


Fig. 1: Formalin-fixed, paraffin-embedded human colon carcinoma stained with CF488-conjugated Nucleolin MAb (364-5 + NCL/902).