

### 36-3734: Anti-Cytokeratin 7/17 Monoclonal Antibody(Clone: C-46)

<b>Clonality :</b>	Monoclonal
<b>Clone Name :</b>	C-46
<b>Application :</b>	FACS,IF,WB,IHC
<b>Reactivity :</b>	Human
<b>Gene :</b>	KRT7 & KRT17
<b>Gene ID :</b>	3855; 3872
<b>Uniprot ID :</b>	P08729 ; Q04695
<b>Alternative Name :</b>	CK-7, K2C7, Keratin 55K Type II Cytoskeletal, Keratin Simple Epithelial Type 1 K7, Keratin Type II Cytoskeletal 7, Krt2-7, KRT7, Sarcolectin, SCL, Type II Mesothelial Keratin K7, Type-II Keratin Kb7; CK17; K17; Keratin Type I Cytoskeletal 17; Keratin-17; KRT17; PCHC1
<b>Isotype :</b>	Mouse IgG1, kappa
<b>Immunogen Information :</b>	Cytoskeletal preparation from HeLa cells (human cervical carcinoma cells)

#### Description

It recognizes intermediate filament proteins (IFP's) of 55kDa and 46kDa, which are identified as cytokeratin 7 and Cytokeratin 17 respectively. On formalin-fixed, paraffin embedded sections, C-46 reacts with keratin 7 only. Cytokeratins comprise a diverse group of intermediate filament proteins (IFPs) that are expressed as pairs in both keratinized and non-keratinized epithelial tissue. Cytokeratins play a critical role in differentiation and tissue specialization and function to maintain the overall structural integrity of epithelial cells. Cytokeratins have been found to be useful markers of tissue differentiation, which is directly applicable to the characterization of malignant tumors. Cytokeratin 7 is a basic cytokeratin, which is found in most glandular and transitional epithelia but not in the stratified squamous epithelia. Cytokeratin 7 is expressed in the epithelial cells of ovary, lung, and breast but not of colon, prostate, or gastrointestinal tract. Cytokeratin 17 is expressed in epithelial cells of various origins, such as bronchial epithelial cells and skin appendages. Cytokeratin 17 antibody marks basal cell differentiation.

#### Product Info

<b>Amount :</b>	20 µg / 100 µg
<b>Content :</b>	200 µg/ml of Ab Purified from Bioreactor Concentrate by Protein A/G. Prepared in 10mM PBS with 0.05% BSA & 0.05% azide. Also available WITHOUT BSA & azide at 1.0mg/ml.
<b>Storage condition :</b>	Antibody with azide - store at 2 to 8°C. Antibody without azide - store at -20 to -80°C. Antibody is stable for 24 months. Non-hazardous.

#### Application Note

Flow Cytometry (1-2ug/million cells); Immunofluorescence (1-2ug/ml); Western Blot (1-2ug/ml); Immunohistochemistry (Formalin-fixed) (1-2ug/ml for 30 min at RT)(Staining of formalin-fixed tissues requires heating tissue sections in 10mM Tris with 1mM EDTA, pH 9.0, for 45 min at 95&degC followed by cooling at RT for 20 minutes);

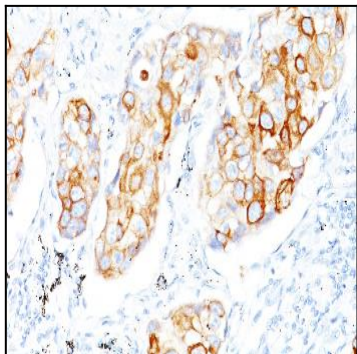


Fig. 1: Formalin-fixed, paraffin-embedded human Lung SCC stained with Cytokeratin 7/17 Mouse Monoclonal Antibody (C-46).

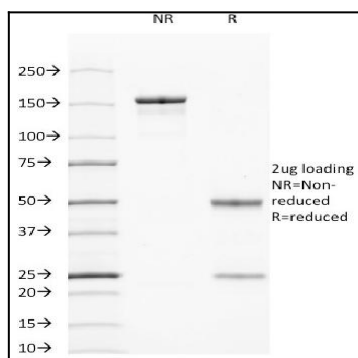


Fig. 2: SDS-PAGE Analysis Purified Cytokeratin 7/17 Mouse Monoclonal Antibody (C-46). Confirmation of Purity and Integrity of Antibody.