

## 36-3738: Anti-Cytomegalovirus p65 (CMV-p65) Monoclonal Antibody(Clone: CMV101)

<b>Clonality :</b>	Monoclonal
<b>Clone Name :</b>	CMV101
<b>Application :</b>	ELISA,ICC,IF
<b>Isotype :</b>	Mouse IgG1, kappa
<b>Immunogen Information :</b>	Recombinant CMV-p65 protein

### Description

Ten to forty percent of the patients with acquired immunodeficiency syndrome (AIDS) develop cytomegalovirus (CMV) infections. In some patients with AIDS, CMV is detected in the bronchoalveolar lavage fluid (BALF), urine, and other specimens, even when there are no symptoms of CMV disease. An indicator of active CMV infection is needed to facilitate the diagnosis of CMV disease in patients with AIDS or HIV infection. CMV p65 antigen was detected in the leukocytes of both the peripheral blood and BALF during the early phase of CMV disease.

### Product Info

<b>Amount :</b>	20 µg / 100 µg
<b>Content :</b>	200 µg/ml of Ab Purified from Bioreactor Concentrate by Protein A/G. Prepared in 10mM PBS with 0.05% BSA & 0.05% azide. Also available WITHOUT BSA at 1.0mg/ml.
<b>Storage condition :</b>	Antibody with azide - store at 2 to 8°C. Antibody is stable for 24 months. Non-hazardous.

### Application Note

ELISA (For coating, order Ab without BSA); Immunocytochemistry (Acetone or paraformaldehyde fixed) (1-2ug/ml for 30 min); Immunofluorescence (1-2ug/ml);

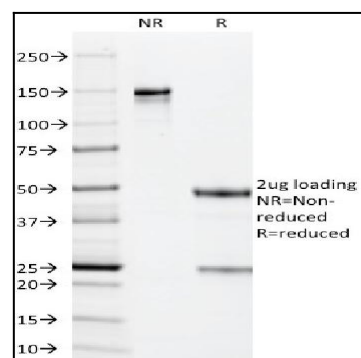


Fig. 1: SDS-PAGE Analysis Purified CMV-p65 Mouse Monoclonal Antibody (CMV101). Confirmation of Purity and Integrity of Antibody.