

## 36-3746: Anti-Small Cell Lung Carcinoma Antigen (SCLC Marker) Monoclonal Antibody(Clone: MOC-52)

<b>Clonality :</b>	Monoclonal
<b>Clone Name :</b>	MOC-52
<b>Application :</b>	ICC,IF
<b>Reactivity :</b>	Human
<b>Isotype :</b>	Mouse IgG1, kappa
<b>Immunogen Information :</b>	Lung Cancer-associated antigen isolated from small cell lung carcinoma-derived cell line

### Description

This MAb reacts with a membrane-associated protein present in normal and malignant neuroendocrine tissues including small cell lung cancer (SCLC). It stains neural and a variable number of endocrine tissues and in the lung it reacts preferentially with SCLC and carcinoids. Its epitope is destroyed during formalin fixation. This antibody was categorized during the First International Workshop on Small Cell Lung Cancer Antigens held in London in April 1987. There are two major types of Lung Carcinoma: non-small cell, which accounts for 80% of all cases; and small cell, which accounts for roughly 20% of all lung cancers reported. The lung continues to be a customary place for cancer migration from tumors elsewhere in the body. Treatment depends on the specific cell type of the cancer, level of progression and status of the individual patient.

### Product Info

<b>Amount :</b>	20 µg / 100 µg
<b>Content :</b>	200 µg/ml of Ab Purified from Bioreactor Concentrate by Protein A/G. Prepared in 10mM PBS with 0.05% BSA & 0.05% azide. Also available WITHOUT BSA & azide at 1.0mg/ml.
<b>Storage condition :</b>	Antibody with azide - store at 2 to 8°C. Antibody without azide - store at -20 to -80°C. Antibody is stable for 24 months. Non-hazardous.

### Application Note

Immunofluorescence (1-2ug/ml); Immunocytochemistry (Frozen) (1-2ug/ml for 30 minutes at RT);

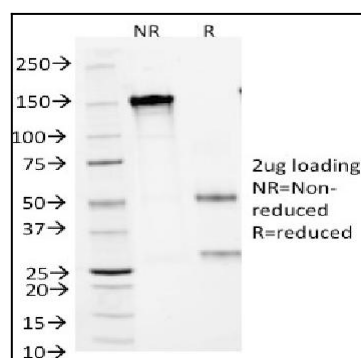


Fig. 1: SDS-PAGE Analysis Purified SCLC Mouse Monoclonal Antibody (MOC-52). Confirmation of Purity and Integrity of Antibody.