

36-3757: Anti-Human Nucleolar Antigen (Marker For Human Cells) Monoclonal Antibody(Clone: NM95)-CF488

Clonality :	Monoclonal
Clone Name :	NM95
Application :	FACS,IF,
Reactivity :	Human
Conjugate :	CF488
Isotype :	Mouse IgG1, kappa
Immunogen Information :	Nuclei of myeloid leukemia biopsy cells

Description

This MAb is an excellent marker for human cells in xenographic model research. It reacts specifically with human cells. This monoclonal antibody is part of a new panel of reagents, which recognizes subcellular organelles or compartments of human cells. These markers may be useful in identification of these organelles in cells, tissues, and biochemical preparations. MAb NM95 recognizes an antigen associated with the nucleoli in human cells. It can be used to stain the nucleoli in cell or tissue preparations and can be used as a marker of the nucleoli in subcellular fractions. It produces a speckled pattern in the nuclei of cells of normal and malignant cells and may be used to stain the nucleoli of cells in fixed or frozen tissue sections. It can be used with paraformaldehyde fixed frozen tissue or cell preparations and formalin fixed, paraffin-embedded tissue sections.

Product Info

Amount :	0.5 ml at 100µg/ml
Content :	Antibody Purified from Bioreactor Concentrate by Protein A/G and conjugated to various reporter molecules. Prepared in 10mM PBS with 0.05% BSA and 0.05% azide. Contact us if you require this Ab in a different format.
Storage condition :	Antibody with azide - store at 4 to 8°C. Antibody is stable for 24 months. Non-hazardous.

Application Note

Flow Cytometry (5ul per test per one million cells in 0.1ml or 5ul per 100ul of whole blood);Immunofluorescence (1:50-1:100);(Staining of formalin-fixed tissues requires heating tissue sections in 10mM Tris with 1mM EDTA, pH 9.0, for 45 min at 95°C followed by cooling at RT for 20 minutes);

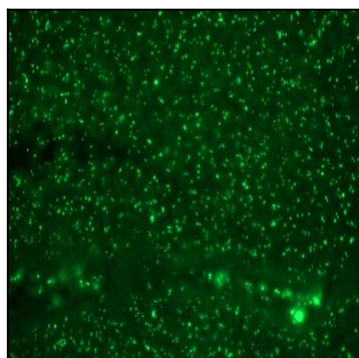


Fig. 1: Formalin-fixed, paraffin-embedded human Colon Carcinoma stained with CF488-labeled human Nucleolar Monoclonal Antibody (NM95).

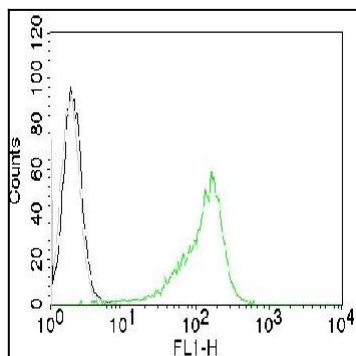


Fig. 2: Flow Cytometric Analysis of human Nucleolar Ag on 293T cells. Black: cells alone; Grey: Isotype Control; Green: CF488-labeled human Nucleolar Monoclonal Antibody (NM95).