

36-3759: Anti-Cytokeratin 8/18 Monoclonal Antibody(Clone: KRT8.18/1346)

Clonality :	Monoclonal
Clone Name :	KRT8.18/1346
Application :	IHC
Reactivity :	Human
Gene :	KRT8 & KRT18
Gene ID :	3856; 3875
Uniprot ID :	P05787 ; P05783
Alternative Name :	CARD2; CK8; CYK8; CYKER; Cytokeratin Endo A; DreK8; EndoA; K2C8; K8; Keratin 8; Krt 2.8; KRT8; Type-II Keratin Kb8. Cell Proliferation-inducing Gene 46 Protein; CK18; CYK18Cytokeratin Endo B; K18; Keratin-18; Kerd; KRT18
Isotype :	Mouse IgG1, kappa
Immunogen Information :	Cytoskeleton preparation from HeLa cells

Description

Cytokeratin 8 (CK8) belongs to the type II (or B or basic) subfamily of high molecular weight cytokeratins and exists in combination with cytokeratin 18 (CK18). This MAb recognizes all simple epithelia including glandular epithelium, for example thyroid, female breast, gastrointestinal tract, respiratory tract, and urogenital tract including transitional epithelium. All adenocarcinomas and most squamous carcinomas are positive but keratinizing squamous carcinomas are usually negative. This antibody is useful in demonstrating the presence of Paget cells; there is very little keratin 18 in the normal epidermis so only Paget cells are stained.

Product Info

Amount :	20 µg / 100 µg
Content :	200 µg/ml of Ab Purified from Bioreactor Concentrate by Protein A/G. Prepared in 10mM PBS with 0.05% BSA & 0.05% azide. Also available WITHOUT BSA & azide at 1.0mg/ml.
Storage condition :	Antibody with azide - store at 2 to 8°C. Antibody without azide - store at -20 to -80°C. Antibody is stable for 24 months. Non-hazardous.

Application Note

Immunohistochemistry (Formalin-fixed) (0.1-0.2ug/ml for 30 min at RT)(Staining of formalin-fixed tissues requires heating tissue sections in 10mM Tris with 1mM EDTA, pH 9.0, for 45 min at 95°C followed by cooling at RT for 20 minutes);

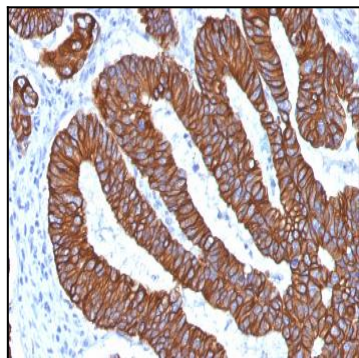


Fig. 1: Formalin-fixed, paraffin-embedded human Colon Carcinoma stained with Cytokeratin 8/18 Monoclonal Antibody (KRT8.18/1346).

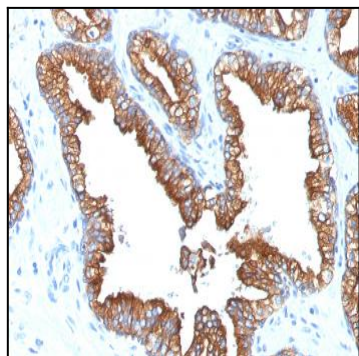


Fig. 2: Formalin-fixed, paraffin-embedded human Prostate Carcinoma stained with Cytokeratin 8/18 Monoclonal Antibody (KRT8.18/1346).

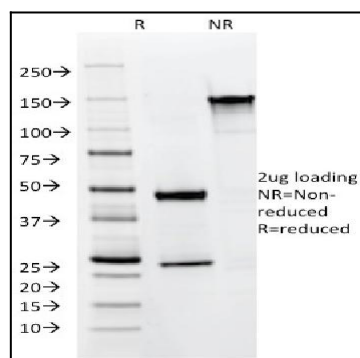


Fig. 3: SDS-PAGE Analysis of Purified Cytokeratin 8/18 Mouse Monoclonal Antibody (KRT8.18/1346). Confirmation of Integrity and Purity of Antibody.