

### 36-3764: Anti-Hepatocyte Specific Antigen (Hepatocellular Marker) Monoclonal Antibody(Clone: HSA133)

<b>Clonality :</b>	Monoclonal
<b>Clone Name :</b>	HSA133
<b>Application :</b>	ELISA
<b>Reactivity :</b>	Human
<b>Isotype :</b>	Mouse IgG2b, kappa
<b>Immunogen Information :</b>	SK-H1A9-2 human hepatocellular carcinoma cells

#### Description

MAb HSA133 stains human liver canaliculi and a subset of hepatocellular carcinomas. In frozen sections, it stains liver canaliculi strongly and may be used as a marker of this hepatic substructure. Cell preparations of hepatocellular carcinoma biopsies and cell lines are found to bind this MAb on the cell surface. HSA133 strongly stains liver canaliculi and hepatic carcinoma cells using frozen sections or paraformaldehyde fixed cell preparations.

#### Product Info

<b>Amount :</b>	20 µg / 100 µg
<b>Content :</b>	200 µg/ml of Ab Purified from Bioreactor Concentrate by Protein A/G. Prepared in 10mM PBS with 0.05% BSA & 0.05% azide. Also available WITHOUT BSA & azide at 1.0mg/ml.
<b>Storage condition :</b>	Antibody with azide - store at 2 to 8°C. Antibody without azide - store at -20 to -80°C. Antibody is stable for 24 months. Non-hazardous.

#### Application Note

ELISA (For coating, purchase antibody without BSA);

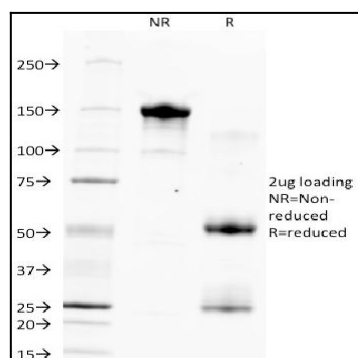


Fig. 1: SDS-PAGE Analysis Purified Hepatocyte Specific Antigen Monoclonal Antibody (HSA133). Confirmation of Purity and Integrity of Antibody.