

## 36-3805: Anti-Golgi Complex (Marker for Human Cells) Monoclonal Antibody(Clone: GLG1/2829R)

<b>Clonality :</b>	Monoclonal
<b>Clone Name :</b>	GLG1/2829R
<b>Application :</b>	IHC
<b>Reactivity :</b>	Human
<b>Alternative Name :</b>	Golgi Complex; Golgi apparatus; Golgi zone
<b>Isotype :</b>	Rabbit IgG
<b>Immunogen Information :</b>	SU-DHL-1 large cell lymphoma cells.

### Description

This MAb recognizes an antigen associated with the Golgi complex in human cells only. It can be used to stain the Golgi complex in cell or tissue preparations and can be used as a Golgi marker in subcellular fractions. It produces a diffuse staining pattern of the Golgi zone in normal and malignant cells. This MAb is an excellent marker for human cells in xenographic model research. It reacts specifically with human cells. The Golgi apparatus is an organelle present in all eukaryotic cells that forms a part of the endomembrane system. The primary function of the Golgi apparatus is to process and package macromolecules synthesized by the cell for exocytosis or use within the cell. The Golgi is made up of a stack of flattened, membrane-bound sacs known as cisternae, with three functional regions: the cis face, medial region and trans face. Each region consists of various enzymes that selectively modify the macromolecules passing through them, depending on where they are destined to reside. Several spherical vesicles that have budded off of the Golgi are present surrounding the main cisternae.

### Product Info

<b>Amount :</b>	20 µg / 100 µg
<b>Content :</b>	200 µg/ml of Ab Purified from Bioreactor Concentrate by Protein A/G. Prepared in 10mM PBS with 0.05% BSA & 0.05% azide. Also available WITHOUT BSA at 1.0mg/ml.
<b>Storage condition :</b>	Antibody with azide - store at 2 to 8°C. Antibody without azide - store at -20 to -80°C. Antibody is stable for 24 months. Non-hazardous.

### Application Note

Immunohistochemistry (Formalin-fixed) (1-2ug/ml for 30 minutes at RT)(Staining of formalin-fixed tissues requires heating tissue sections in 10mM Tris with 1mM EDTA, pH 9.0, for 45 min at 95°C followed by cooling at RT for 20 minutes);

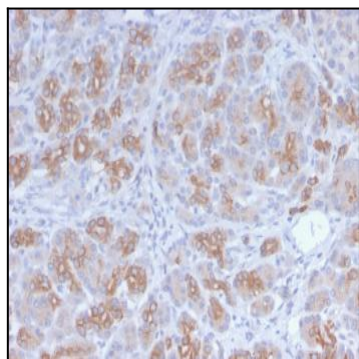


Fig. 1: Formalin-fixed, paraffin-embedded human Breast Carcinoma stained with Golgi Rabbit Recombinant Monoclonal Antibody (GLG1/2829R).

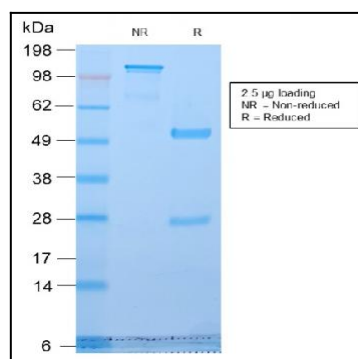


Fig. 2: SDS-PAGE Analysis Purified Golgi Rabbit Recombinant Monoclonal Antibody (GLG1/2829R). Confirmation of Purity and Integrity of Antibody.