

36-3812: Anti-Bromodeoxyuridine (BrdU) (Proliferation Marker) Monoclonal Antibody(Clone: BRD/1539R)

Clonality :	Monoclonal
Clone Name :	BRD/1539R
Application :	ELISA
Reactivity :	All species
Alternative Name :	Bromodeoxyuridine, BUdr
Isotype :	Rabbit IgG
Immunogen Information :	Bromodeoxyuridine (BrdU) conjugated to KLH

Description

It reacts with Bromodeoxyuridine (BrdU) in single stranded DNA (produced by partial denaturation of double stranded DNA), BrdU coupled to a protein carrier, as well as free BrdU. BrdU is a thymidine analog, incorporated into cell nuclei during DNA synthesis prior to mitosis. Antibody to BrdU is helpful in detecting S-phase cells, providing useful information on the aggressiveness of tumors.

Product Info

Amount :	20 µg / 100 µg
Content :	200 µg/ml of Ab Purified from Bioreactor Concentrate by Protein A/G. Prepared in 10mM PBS with 0.05% BSA & 0.05% azide. Also available WITHOUT BSA & azide at 1.0mg/ml.
Storage condition :	Antibody with azide - store at 2 to 8°C. Antibody without azide - store at -20 to -80°C. Antibody is stable for 24 months. Non-hazardous.

Application Note

ELISA (For coating, order antibody without BSA),

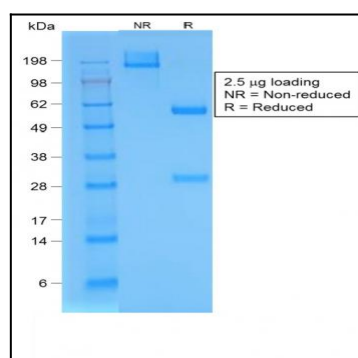


Fig. 1: SDS-PAGE Analysis Purified BrdU Rabbit Recombinant Monoclonal Antibody (BRD/1539R). Confirmation of Purity and Integrity of Antibody.