

### 36-3818: Anti-PD1, Mouse Monoclonal Antibody(Clone: RMP1-14)

<b>Clonality :</b>	Monoclonal
<b>Clone Name :</b>	RMP1-14
<b>Application :</b>	ELISA,FACS,IF
<b>Reactivity :</b>	Mouse
<b>Gene ID :</b>	18566
<b>Uniprot ID :</b>	Q02242
<b>Alternative Name :</b>	CD279; CD279 antigen; PD1; PDCD1; Programmed cell death 1; Programmed cell death protein 1; Systemic lupus erythematosus susceptibility 2 (SLEB2)
<b>Isotype :</b>	Rat IgG2a, kappa
<b>Immunogen Information :</b>	PDCD1 transfected BHK cells

#### Description

PD-1 is expressed on a subset of CD4-CD8-thymocytes, and on activated T and B cells. PD-1 is thought to be involved in lymphocyte clonal selection and peripheral tolerance. The PD-1 ligands, PD-L1 (also known as B7-H1) and PD-L2 (B7-DC), are members of the B7 immunoglobulin superfamily. PD-1 is transiently expressed on CD4 and CD8 thymocytes as well as activated T and B-lymphocytes and myeloid cells. Additionally, Pdc1 mRNA is expressed in developing B-lymphocytes during the pro-B-cell stage. The RMP1-14 antibody has been reported to block the binding of PD-1 to its ligands (B7-H1 and B7-DC) and to inhibit T cell proliferation and cytokine production co-stimulated by macrophages (but not by dendritic cells and B cells).

#### Product Info

<b>Amount :</b>	20 µg / 100 µg
<b>Content :</b>	200 µg/ml of Ab Purified from Bioreactor Concentrate by Protein A/G. Prepared in 10mM PBS with 0.05% BSA & 0.05% azide. Also available WITHOUT BSA & azide at 1.0mg/ml.
<b>Storage condition :</b>	Antibody with azide - store at 2 to 8°C. Antibody without azide - store at -20 to -80°C. Antibody is stable for 24 months. Non-hazardous.

#### Application Note

ELISA (For coating, order Ab without BSA & Azide); Neutralization Studies (Order Ab without BSA & Azide); Flow Cytometry (1-2ug/million cells); Immunofluorescence (1-2ug/ml);

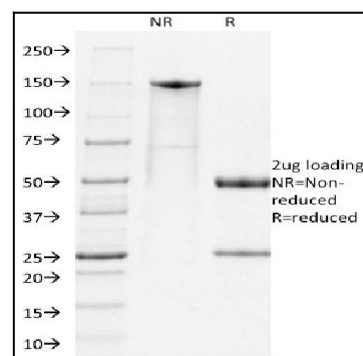


Fig. 1: SDS-PAGE Analysis Purified PD1 Rat Monoclonal Antibody (RMP-1-14). Confirmation of Integrity and Purity of Antibody.