

## 10-7562-BAF: Monoclonal Antibody to Human PD-L1 (Clone: ABM4E54) (BSA/AZIDE Free)

|                                |   |
|--------------------------------|---|
| <b>Clonality :</b>             | Monoclonal  |
| <b>Clone Name :</b>            | ABM4E54   |
| <b>Application :</b>           | IHC,FACS,WB   |
| <b>Reactivity :</b>            | Human   |
| <b>Gene :</b>                  | CD274   |
| <b>Gene ID :</b>               | 29126   |
| <b>Uniprot ID :</b>            | Q9NZQ7  |
| <b>Format :</b>                | Purified  |
| <b>Alternative Name :</b>      | CD274,B7H1,PDCD1L1,PDCD1LG1,PDL1  |
| <b>Isotype :</b>               | Mouse IgG2a Kappa   |
| <b>Immunogen Information :</b> | A partial length recombinant PDL1 protein (amino acids 18-227) was used as the immunogen for this antibody. |

### Description

PD-L1 (CD274/B7-H1) is a critical membrane-bound costimulatory molecule belonging to the B7 superfamily that inhibits immune responses through its receptor, PD-1. PD-L1 plays a key role in the pathogenesis of inflammatory diseases (programmed death 1). It is widely expressed in the mononuclear phagocyte system (MPS), may co-stimulate T cells, and regulates inflammatory responses. PD-L1 exerts inflammation regulatory functions via a negative co-stimulatory effect on T cell functions to inhibit cytokine secretion, facilitate apoptosis of activated T cells, and induce T cell anergy. Aberrant expression and dysregulation of CD274 have been reported during bacterial infection, inflammation, and in numerous autoimmune diseases.

### Product Info

|                            |   |
|----------------------------|---|
| <b>Amount :</b>            | 25 µg / 100 µg  |
| <b>Purification :</b>      | Protein G Chromatography  |
| <b>Content :</b>           | 25 µg in 50 µl/100 µg in 200 µl PBS (sterile filtered), BSA, Glycerol and Sodium azide free.                                  |
| <b>Storage condition :</b> | Store the antibody at 4°C; stable for 6 months. For long-term storage; store at -20°C. Avoid repeated freeze and thaw cycles. |

### Application Note

Western blot analysis: 2-4 µg/ml; Immunohistochemical analysis-5-10 µg/ml; FACS: 1-2 µg/ml

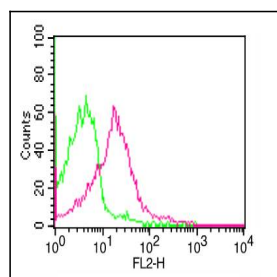


Figure-1: Cell Surface FLOW analysis of PD-L1 in PHA treated human PBMC using 1 µg of PD-L1 antibody (Clone: ABM4E54). Green represents isotype control; red represents anti-PD-L1 antibody. Goat anti-mouse PE conjugate was used as secondary antibody.

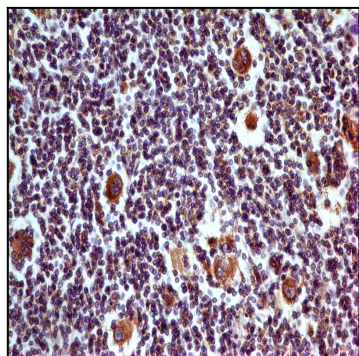


Figure-2: Immunohistochemical analysis of PD-L1 in Hodgkin's Lymphoma tissue using PD-L1 antibody (Clone: ABM4E54) at 5 µg/ml..

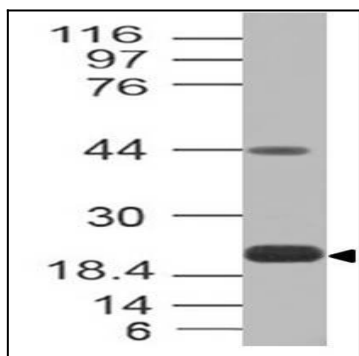


Figure-3: Western blot analysis of PD-L1. Anti-PD-L1 antibody (Clone: ABM4E54) was tested at 0.5 µg/ml on Recombinant lysates.

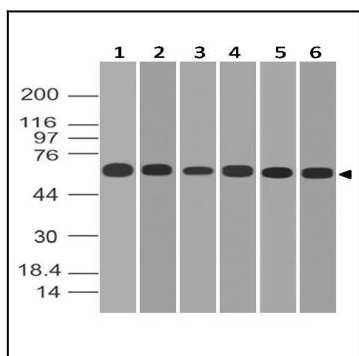


Figure-4: Western blot analysis of PD-L1. Anti-PD-L1 antibody (Clone: ABM4E54) was tested at 2 µg/ml on (1) A549, (2) MCF-7, (3) 293, (4) HCT-116, (5) Saos2 and (6) HeLa lysates.

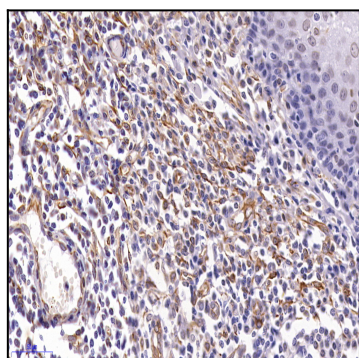


Figure-5: Immunohistochemical analysis of PD-L1 in Human Tonsil tissue using PD-L1 antibody (Clone: ABM4E54) at 5 µg/ml.

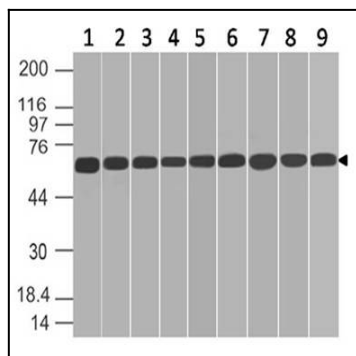


Figure-6: Western blot analysis of PD-L1. Anti-PD-L1 antibody (Clone: ABM4E54) was tested at 0.5  $\mu$ g/ml on (1) HepG2, (2) SKBR3, (3) A431, (4) THP1, (5) NCCIT, (6) PC3, (7) PANC-1, (8) U87 and (9) KATO-111 lysates.

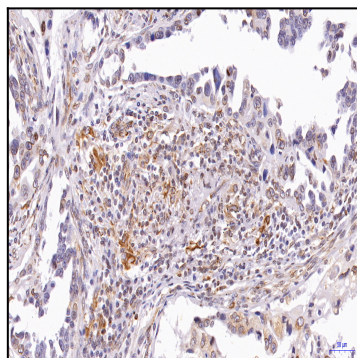


Figure-7: Immunohistochemical analysis of PD-L1 in Human Lung Cancer tissue using PD-L1 antibody (Clone: ABM4E54).

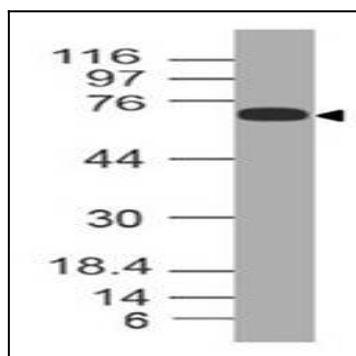


Figure-8: Western blot analysis of PD-L1. Anti-PD-L1 antibody (Clone: ABM4E54) was tested at 2  $\mu$ g/ml on h Spleen lysate.