

## 35-1874: ACE2 Antibody

<b>Clonality :</b>	Polyclonal
<b>Application :</b>	WB
<b>Reactivity :</b>	Human
<b>Gene :</b>	ACE2
<b>Gene ID :</b>	59272
<b>Uniprot ID :</b>	Q9BYF1
<b>Format :</b>	Purified
<b>Alternative Name :</b>	ACEH antibody; DKFZp434A014 antibody; ACE2 antibody; metalloprotease MPROT15 antibody; angiotensin-converting enzyme homolog antibody; angiotensin I converting enzyme 2 antibody; ACE-related carboxypeptidase antibody; angiotensin-converting enzyme 2 antibody
<b>Isotype :</b>	Rabbit IgG
<b>Immunogen Information :</b>	Recombinant fragment corresponding to a region within amino acids 406 and 677 of ACE2.

## Description

The protein encoded by this gene belongs to the angiotensin-converting enzyme family of dipeptidyl carboxydipeptidases and has considerable homology to human angiotensin 1 converting enzyme. This secreted protein catalyzes the cleavage of angiotensin I into angiotensin 1-9, and angiotensin II into the vasodilator angiotensin 1-7. The organ- and cell-specific expression of this gene suggests that it may play a role in the regulation of cardiovascular and renal function, as well as fertility. In addition, the encoded protein is a functional receptor for the spike glycoprotein of the human coronaviruses SARS and HCoV-NL63.

## Product Info

<b>Amount :</b>	100 µl
<b>Purification :</b>	Antibodies were purified by antigen-affinity chromatography.
<b>Content :</b>	Supplied at Tris, 0.1M Glycine, 20% Glycerol (pH7). 0.01% Thimerosal was added as a preservative.
<b>Storage condition :</b>	Store at -20°C

## Application Note

Western blotting: 1:500-1:3000

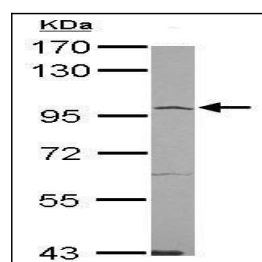


Figure-1: Western blot analysis of ACE2. Anti- ACE2 antibody (35-1874) was used at 1:1000 dilution on Hela lysate.