

## 35-1875: ACE2 Antibody

<b>Clonality :</b>	Polyclonal
<b>Application :</b>	ELISA,IHC,WB
<b>Reactivity :</b>	Mouse,Human
<b>Gene :</b>	ACE2
<b>Gene ID :</b>	59272
<b>Uniprot ID :</b>	Q9BYF1
<b>Format :</b>	Purified
<b>Alternative Name :</b>	ACEH antibody; DKFZp434A014 antibody; ACE2 antibody; metalloprotease MPROT15 antibody; angiotensin-converting enzyme homolog antibody; angiotensin I converting enzyme 2 antibody; ACE-related carboxypeptidase antibody; angiotensin-converting enzyme 2 antibody
<b>Isotype :</b>	Rabbit IgG
<b>Immunogen Information :</b>	This Antibody was raised against a synthetic peptide corresponding to amino acids near the center of human ACE2.

## Description

Angiotensin-converting enzyme 2 (ACE2) plays a central role in vascular, renal, and myocardial physiology. In contrast to its homolog ACE, ACE2 expression is restricted to heart, kidney, and testis. Recently, ACE2 has also been shown to be a functional receptor of the SARS coronavirus. The normal function of ACE2 is to convert the inactive vasoconstrictor angiotensin I (AngI) to Ang1-9 and the active form AngII to Ang1-7, unlike ACE, which converts AngI to AngII. While the role of these vasoactive peptides is not well understood, lack of ACE2 expression in ace2-/ace2- mice leads to severely reduced cardiac contractility, indicating its importance in regulating heart function.

## Product Info

<b>Amount :</b>	100 µl
<b>Purification :</b>	Affinity chromatography purified via peptide column.
<b>Content :</b>	Supplied in PBS containing 0.02% sodium azide.
<b>Storage condition :</b>	Stored at -20°C, stable for one year. As with all antibodies care should be taken to avoid repeated freeze thaw cycles. Antibodies should not be exposed to prolonged high temperatures.

## Application Note

Western blotting analysis: 0.5-2 µg/ml, Immunohistochemical analysis-2-4 µg/ml

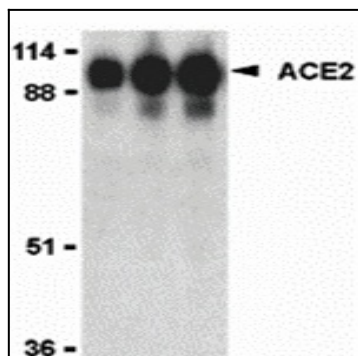


Figure-1: Western blot analysis of ACE2. Anti- ACE2 antibody (35-1875) was used at 0.5, 1, 2 µg/ml on human kidney lysate.

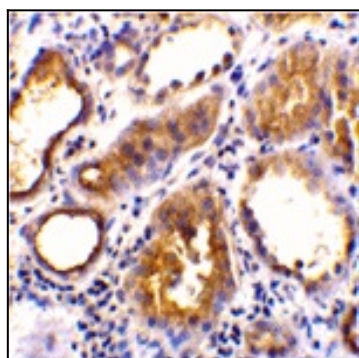


Figure-2: Immunohistochemical analysis of ACE2 in human kidney tissue using ACE2 antibody at 2 µg/ml.