

## 32-190036: Recombinant SARS-CoV-2 papain-like protease with His tag

**Alternative Name :** PLPro; PL-PRO; pp1a; Papain-like Protease; Replicase polyprotein 1a; ORF1a polyprotein; Plpro; COVID-19

### Description

Source: E. coli

Endotoxin: < 0.1 EU/μg of the protein by LAL method.

Calculated MW : 36.6kDa

Recombinant 2019-nCoV papain-like protease is produced by E. coli expression system. The target protein is expressed with sequence (Glu1564-Lys1878) of 2019-ncov papain-like protease (Accession #YP\_009725299.1) fused with an initial Met, a 6xHis tag at the N-terminus.

### Product Info

**Amount :** 100ug / 10 μg

**Purification :** > 90% by SDS-PAGE.

**Content :** Supplied as a 0.22 μM filtered solution in 20mM Tris, 20% Glycerol, 10mM  $\beta$ -ME, pH7.5.

**Storage condition :** This product is stable at  $-70^{\circ}\text{C}$  for up to 1 year from the date of receipt. For optimal storage, aliquot into smaller quantities after centrifugation and store at recommended temperature. Avoid repeated freeze-thaw cycles.

**Amino Acid :** Recombinant 2019-nCoV papain-like protease is produced by E. coli expression system. The target protein is expressed with sequence (Glu1564-Lys1878) of 2019-ncov papain-like protease (Accession #YP\_009725299.1) fused with an initial Met, a 6xHis tag at the N-terminus.

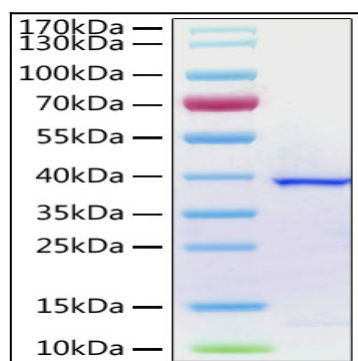


Fig 1 : Recombinant 2019-nCoV papain-like protease with His tag was determined by SDS-PAGE with Coomassie Blue, showing a band at 38 kDa.