

10-7665: Monoclonal Antibody to Glutamate-Cysteine Ligase Regulatory Subunit /GCLM (Clone: ABM2F9.1A7)

Clonality :	Monoclonal
Clone Name :	ABM2F9.1A7
Application :	WB
Reactivity :	Human
Gene :	GCLM
Gene ID :	2730
Uniprot ID :	P48507
Format :	Purified
Alternative Name :	GCS light chain, Gamma-ECS regulatory subunit, Gamma-glutamylcysteine synthetase regulatory subunit, Glutamate--cysteine ligase modifier subunit
Isotype :	Mouse IgG1, Kappa

Product Info

Amount :	25 µg / 100 µg
Purification :	Protein G Chromatography
Content :	25 µg in 50 µl/100 µg in 200 µl PBS containing 0.05% BSA and 0.05% sodium azide. Sodium azide is highly toxic.
Storage condition :	Store the antibody at 4°C; stable for 6 months. For long-term storage; store at -20°C. Avoid repeated freeze and thaw cycles

Application Note

Recommended dilutions:WB: 1-2 µg/ml. However, this need to be optimized based on the research applications.

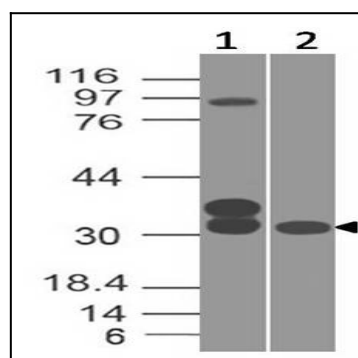


Figure:1- Western blot analysis of GCLM. Anti-GCLM antibody (Clone: ABM2F9.1A7) was tested at 1 µg/ml on (1) h SKM and (2) HT-29 lysates.