

## 21-1007: Recombinant Human ACE2 Fc Protein expressed in CHO-K1

**Application :** Functional Assay, ELISA  
**Uniprot ID :** Q9ByF1  
**Alternative Name :** Alternative name Human ACE2 Protein, Recombinant Human ACE2, Human Recombinant ACE-2, Angiotensin-converting enzyme 2

### Description

**Source: CHO-K1.** Recombinant Human ACE2- Fc protein is produced in CHO-K1. Angiotensin-converting enzyme 2 (ACE2) is an ectoenzyme (carboxypeptidase) with an extracellular catalytic domain that predominantly localizes at the plasma membrane and is thereby able to hydrolyze circulating peptides. ACE2 has approximately 42% sequence identity with ACE, and its cytoplasmic and transmembrane domains show 48% homology to the protein collectrin that plays a critical role in the amino acid absorption of the kidney. ACE2 converts angiotensin I to angiotensin 1-9, a peptide of unknown function, and angiotensin II to angiotensin 1-7, a vasodilator. ACE2 is involved in the regulation of systemic blood pressure and has direct effects on cardiac functions. It is expressed predominantly in endothelial cells of the lung, gut, heart and kidney. ACE2 together with the protease TMPRSS2 acts as a functional receptor for SARS coronavirus as well as for the new highly pathogenic coronavirus, 2019-nCoV/SARS-CoV-2, which is cause for pneumonia COVID-19. It has been shown that human recombinant soluble ACE2 can significantly block early stages of SARS-CoV-2 infection.

### Product Info

**Amount :** 50 ug / 100 µg  
**Purification :** >95% by SDS-PAGE.  
**Content :** PBS and 10% Glycerol  
**Storage condition :** Human ACE2 Fc Recombinant Protein is shipped on ice packs. Upon arrival, Store at -20°C. Do not freeze-thaw multiple times.  
**Amino Acid :** Extracellular domain of human ACE2 (AA 1-740) is fused to C- terminus of the Fc region of the human IgG1.

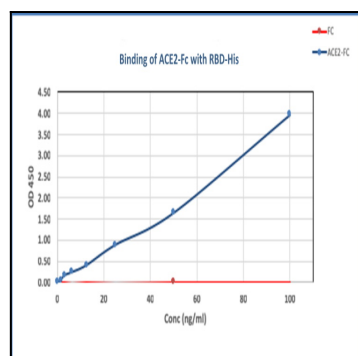


Figure 1: Covid19 RBD-His recombinant protein (cat no. 21-1004) was coated into 96 well ELISA plate (2ug/ml) overnight. ACE2-FC (cat no. 21-1007) or non-specific FC protein was added to the plate starting from conc 1ug/ml to 0 ug/ml, serial diluted. HRP conjugated goat anti-human Fc was used as secondary antibody.