

12-4041: Legionella pneumophila LPS (serogroup 1) mouse mAb

Clonality :	Monoclonal
Clone Name :	AWB4CE4
Application :	ELISA
Conjugate :	Unconjugated
Format :	Purified
Isotype :	Mouse IgG1k
Immunogen Information :	LPS conjugated to BSA

Description

Legionella pneumonia, first discovered after an outbreak in Pennsylvania in 1976 at the American Legion convention, is a common cause of community-acquired pneumonia. Legionella are gram-negative bacteria found in natural aquatic environments, where they are intracellular parasites of protozoa. The serogroup 1 strains most commonly cause human infections. Serotyping can be performed by antibody subgrouping, pulsed-field gele electrophoresis, or DNA sequencing. The lipopolysaccharide, LPS or endotoxin, of serogroup 1 is a bacterial virulence factor that contains 10-75 residues of the unique sugar termed legionaminic acid. Lacking free hydroxyl groups renders this LPS hydrophobic, allowing the bacterium to adhere to target cell membranes including macrophages in the lung.

Product Info

Amount :	20 µg / 100 µg
Content :	1X PBS, 0.02% NaN ₃ , 50% Glycerol, 0.1% BSA
Storage condition :	Store at -20°C. Avoid repeated freeze and thaw cycles.

Application Note

1 µg/mL - 0.001 µg/mL. It is recommended that the reagent be titrated for optimal performance for each application. See product image legends for additional information.

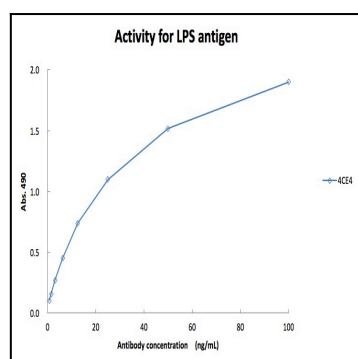


Fig-1: AWB4CE4 antibody shows specific binding to LPS antigen from Legionella pneumophila (serogroup 1).