

12-4084: Phospho-SLP-76 (Tyr128) (Clone: 3F8) rabbit mAb

Clonality :	Monoclonal
Clone Name :	SLP76Y128-3F8
Application :	FACS
Reactivity :	Human, Mouse
Conjugate :	Unconjugated
Format :	Purified
Alternative Name :	Lymphocyte cytosolic protein 2, SH2 domain-containing leukocyte protein of 76 kDa, SLP76, LCP2
Isotype :	Rabbit IgG1k
Immunogen Information :	A synthetic phospho-peptide corresponding to residues surrounding Tyr128 of human phospho SLP-76

Description

SH2 Domain-Containing Leukocyte Protein Of 76 KDa (SLP-76) is an adaptor protein that plays a role in signal transduction in T cells. Studies using a SLP-76-deficient T cell line have demonstrated that SLP-76 is required for optimal phosphorylation and activation of both PLCg1 and the Ras pathway. SLP-76 phosphorylation is mediated by Zap70 upon TCR stimulation. Within an N-terminal acidic region, SLP-76 possesses three tyrosines (Tyr113, 128, and 145), which are phosphorylated upon activation. The sterile alpha-motif (SAM) domain of SLP-76 drives formation of dimers and higher order oligomers. SLP-76 micro-clusters at the immunological synapse enhance signal transduction and T cell activation.

Product Info

Amount :	20 µl / 200 µl
Content :	1X PBS, 0.02% NaN ₃ , 50% Glycerol, 0.1% BSA
Storage condition :	Store at -20°C. Avoid repeated freeze and thaw cycles.

Application Note

1 µg/mL - 0.001 µg/mL. It is recommended that the reagent be titrated for optimal performance for each application. See product image legends for additional information.(0.5mg/ml)

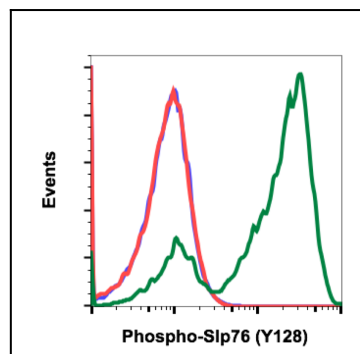


Fig-1: Flow cytometric analysis of Ramos cells secondary antibody only negative control (blue) or untreated (red) or treated with pervanadate (green) using 10 ng/mL Phospho-SLP-76 (Tyr128) antibody SLP76Y128-3F8.

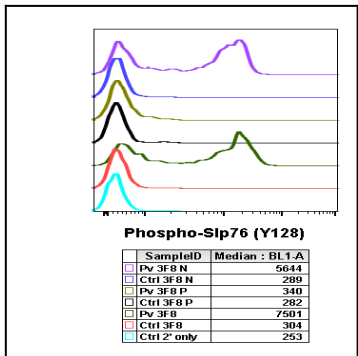


Fig 2 : Peptide blocking flow cytometric analysis of Ramos cells secondary antibody only negative control (light blue) or untreated (red) or treated with pervanadate (green) or untreated and blocked with phospho-peptide (black) or treated and blocked with phospho peptide (gold) or untreated and blocked with non-phospho peptide (dark blue) or treated and blocked with non-phospho peptide (purple) using Phospho-SLP-76 (Tyr128) antibody SLP76Y128-3F8 at 0.01µg/mL.

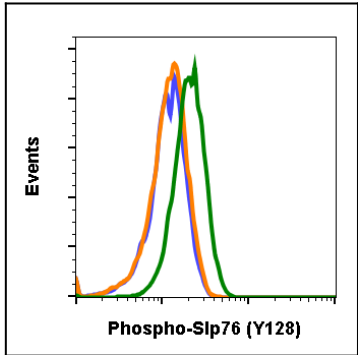


Fig-3: SLP76Y128-3F8 recognizes basal phosphorylation levels in mouse cells. Flow cytometric analysis of NIH3T3 cells secondary antibody only (blue) or 0.1 µg/mL of isotype control (orange) or of Phospho-SLP-76 (Tyr128) antibody SLP76Y128-3F8 (green).

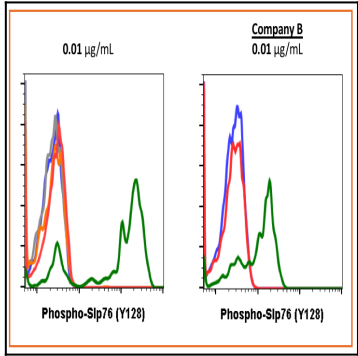


Fig-4: Flow cytometric analysis of Ramos cells secondary antibody only negative control (blue) or untreated (grey) or treated with pervanadate (orange) using 10 ng/mL of isotype control or untreated (red) or pervanadate (green) using 10 ng/mL of Phospho-SLP-76 (Tyr128) antibody SLP76Y128-3F8 or Company B antibody at 10 ng/mL.