

12-4127: Phospho-Stat1 (Ser727) (Clone: C6) rabbit mAb

Clonality :	Monoclonal
Clone Name :	Stat1S727-C6
Application :	FACS, WB
Reactivity :	Human
Conjugate :	Unconjugated
Format :	Purified
Alternative Name :	Signal transducer and activator of transcription 1-alpha/beta, Transcription factor ISGF-3 components p91/p84
Isotype :	Rabbit IgG1k
Immunogen Information :	A synthetic phospho-peptide corresponding to residues surrounding Ser727 of human phospho Stat1

Description

Stat1 mediates the cellular response to IFN alpha, IFNB, and IFNg for the regulation of cell growth and the defense against viral and immune challenges. The Jak-Stat pathway plays a central role in the IFNg response, where Stat1 phosphorylation on Tyr701 causes homodimerization through its SH2 domain, translocation to the nucleus, and binding to gamma-activated sequence (GAS) elements. Early in the activation sequence, Stat1 is also phosphorylated at Ser727 through a mechanism involving PI3 kinase and Akt. Stat1 has been found to correlate with increased resistance to chemotherapeutic drugs. However, Stat1 activation of the immune system helps suppress tumor growth, and multiple melanomas and squamous-cell carcinomas have been known to downregulate Stat1 expression to evade immune surveillance.

Product Info

Amount :	20 µl / 200 µl
Content :	1X PBS, 0.02% NaN ₃ , 50% Glycerol, 0.1% BSA
Storage condition :	Store at -20°C. Avoid repeated freeze and thaw cycles.

Application Note

1 µg/mL - 0.001 µg/mL. It is recommended that the reagent be titrated for optimal performance for each application. See product image legends for additional information. (0.5 mg/ml, more than 200 western blots)

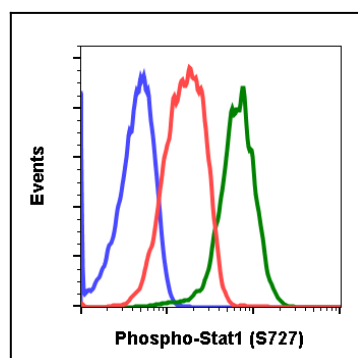


Fig-1: Flow cytometric analysis of U937 cells secondary antibody only negative control (blue) or untreated (red) or treated with IFNα IL-4 and pervanadate (green) using Phospho-Stat1 (Ser727) antibody Stat1S727-C6 at 0.1 µg/mL .

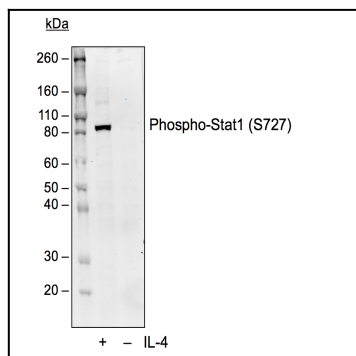


Fig 2 : Western blot analysis of U937 cell extract untreated or treated with IL-4 using 0.1 µg/mL Phospho-Stat1 (Ser727) antibody Stat1S727-C6 .

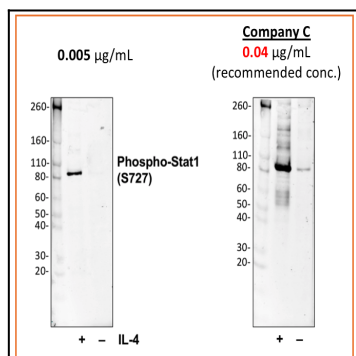


Fig-3: Western blot analysis of U937 cell extract untreated or treated with sorbitol using 0.005 µg/mL Phospho-Stat1 (Ser727) antibody Stat1S727-C6 or Company C antibody at 0.04 µg/mL (manufacturer's recommended concentration) developed using the same exposure.