

12-4150: Phospho-p53 (Ser15) (Clone: 1C11) rabbit mAb APC conjugate

Clonality :	Monoclonal
Clone Name :	P53S15-1C11
Application :	FACS
Reactivity :	Human, Mouse
Conjugate :	APC
Format :	Conjugated
Alternative Name :	Cellular tumor antigen p53, Tumor suppressor p53, TP53
Isotype :	Rabbit IgG1k
Immunogen Information :	A synthetic phospho-peptide corresponding to residues surrounding Ser15 of human phospho p53.

Description

p53 is one of the most highly connected nodes in the signal transduction network in the cell, playing a major role in basic cellular functions. p53 is the first tumor-suppressor gene to be identified, and this gene atypically functions in most human cancers. p53 inactivation in these cancers can prevent formation of homo-tetramers, increase p53 degradation, sequester p53 outside the nucleus, or prevent DNA binding and downstream gene activation. DNA damage is one of the most extensively studied p53 activation mechanism. p53 phosphorylation at the N-terminus decreases affinity for MDM2, preventing p53 degradation and leading to excess accumulation. Phosphorylation at the carboxy terminus of p53 enhances DNA binding.

Product Info

Amount :	10 Tests / 100 Tests
Content :	1X PBS, 0.09% NaN ₃ , 0.2% BSA
Storage condition :	Store at 2-8°C. Avoid repeated freeze and thaw cycles.

Application Note

For flow cytometric staining, the suggested use of this reagent is 5 μ L per million cells or 5 μ L per 100 μ L of staining volume. It is recommended that the reagent be titrated for optimal performance for each application.

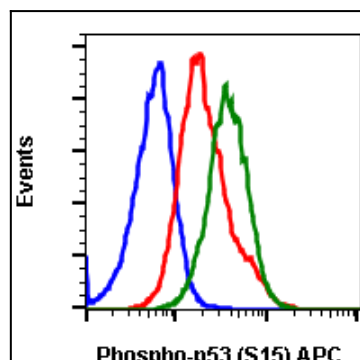


Fig-1: Flow cytometric analysis of Hela cells unstained imatinib treated cells (blue) or stained treated with imatinib (red) or treated with pervanadate (green) using phospho-p53 (Ser15) antibody P53S15-1C11 APC conjugate.