

12-4184: Isotype Control (Clone: G9) rabbit mAb FITC Conjugate

Clonality :	Monoclonal
Clone Name :	KLH-G9
Application :	FACS
Conjugate :	FITC
Isotype :	Rabbit IgG1k
Immunogen Information :	Keyhole limpet hemocyanin carrier protein.

Description

This product is useful as an isotype control for rabbit IgG. In all assays tested, we have not observed any significant non-specific binding from this antibody. This includes flow cytometry, Western blot, ELISA, and biolayer interferometry (Octet). We obtained this antibody from a mouse immunized with keyhole limpet hemocyanin (KLH). This antibody binds to specifically to KLH, an antigen not expressed on human cells, mouse cells, or other species. In contrast to isotype antibodies supplied by other vendors, which have unknown or unreported specificity, we let you know the target of this antibody so that you can determine if it is suitable as a control for your specific assay.

Product Info

Amount :	100 Tests
Content :	1X PBS, 0.09% NaN ₃ , 0.2% BSA
Storage condition :	Store at 2-8°C. Avoid repeated freeze and thaw cycles.

Application Note

Isotype control antibodies should be used at the same concentration as the test antibody.

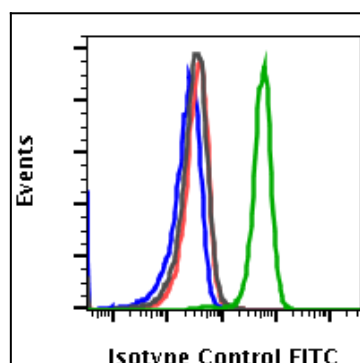


Fig-1: Flow cytometric analysis of U937 cells using rabbit (G9) mAb Isotype Control (FITC Conjugate) for untreated (blue) or treated with IFN α (Red) compared to Phospho-Src (Tyr416) (C4) rabbit mAb (FITC conjugate) untreated (black) or IFN α treated (green).