

## 12-4195: Phospho-MSK1 (Thr581) (Clone: A5) rabbit mAb PE conjugate

<b>Clonality :</b>	Monoclonal
<b>Clone Name :</b>	MSK1T581-A5
<b>Application :</b>	FACS
<b>Reactivity :</b>	Human, Mouse, Rat
<b>Conjugate :</b>	PE
<b>Format :</b>	Conjugated
<b>Alternative Name :</b>	Ribosomal protein S6 kinase alpha-5, S6K-alpha-5, 90 kDa ribosomal protein S6 kinase 5, Nuclear mitogen- and stress-activated protein kinase 1, RSK-like protein kinase, RSKL, RPS6KA5
<b>Isotype :</b>	Rabbit IgG1k
<b>Immunogen Information :</b>	A synthetic phospho-peptide corresponding to residues surrounding Thr581 of human phospho MSK1

### Description

MSK1 (mitogen and stress activated protein kinase 1, phospho MSK1) is activated by Erk in response to growth factors and by p38 in response to cellular stress (1). MSK1 is similar to RSK1 in that it has two kinase domains and a connecting regulatory linker region (2). S364/S381 phosphorylation activates RSK1 (3), which is analogous to residues S360 and S376 of MSK1, which may be important for phospho MSK1 activity.

### Product Info

<b>Amount :</b>	10 Tests / 100 Tests
<b>Content :</b>	1X PBS, 0.09% NaN <sub>3</sub> , 0.2% BSA
<b>Storage condition :</b>	Store at 2-8°C. Avoid repeated freeze and thaw cycles.

### Application Note

For flow cytometric staining, the suggested use of this reagent is 5  $\mu$ L per million cells or 5  $\mu$ L per 100  $\mu$ L of staining volume. It is recommended that the reagent be titrated for optimal performance for each application. See product image legends for additional information.

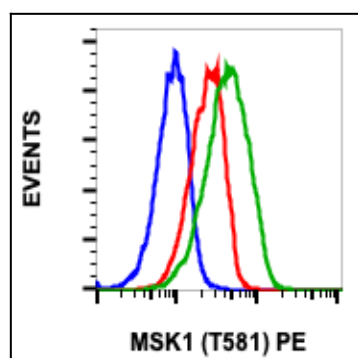


Fig-1: Flow cytometric analysis of COS7 cells unstained and untreated (blue) or untreated (red) or treated with TPA + CalA (green) and stained using phospho-MSK1(T581) PE conjugated antibody MSK1T581-A5.