

## 12-4216: Phospho-Histone H2A.X (Ser139) (Clone: 1E4) rabbit mAb SureLight 488 conjugate

<b>Clonality :</b>	Monoclonal
<b>Clone Name :</b>	HisH2AXS139-1E4
<b>Application :</b>	FACS
<b>Reactivity :</b>	Human, Mouse
<b>Conjugate :</b>	SureLight 488
<b>Format :</b>	Conjugated
<b>Alternative Name :</b>	H2AFX, H2AX, γH2AX, gamma-H2AX
<b>Isotype :</b>	Rabbit IgG1k
<b>Immunogen Information :</b>	A synthetic phospho-peptide corresponding to residues surrounding Ser139 of human phospho histone H2A.X.

### Description

Histone H2AX is a variant of the nucleosome core histone H2A and is phosphorylated at Ser139 in response to DNA damage. Histone H2AX phosphorylation is considered a specific reporter of double-strand DNA breaks. The protein is also referred to as γH2AX when phosphorylated at Ser139. H2AX phosphorylation is especially strong in response to double-strand breaks formed during apoptosis. However, physiological phosphorylation of Histone H2AX occurs when double-strand DNA breaks are formed during meiosis and V(D)J recombination. A549 and DU145 cell lines have been found to have higher expression levels of phosphorylated Histone H2AX compared to Jurkat, MCF-7, or HL-60 cell lines.

### Product Info

<b>Amount :</b>	10 Tests / 100 Tests
<b>Content :</b>	1X PBS, 0.09% NaN <sub>3</sub> , 0.2% BSA
<b>Storage condition :</b>	Store at 2-8°C. Avoid repeated freeze and thaw cycles.

### Application Note

For flow cytometric staining, the suggested use of this reagent is 5  $\mu$ L per million cells or 5  $\mu$ L per 100  $\mu$ L of staining volume. It is recommended that the reagent be titrated for optimal performance for each application.

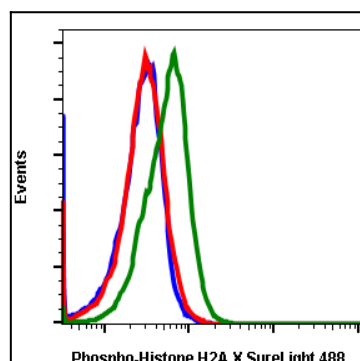


Fig-1: Flow cytometric analysis of 293T cells unstained untreated (blue) or stained untreated (red) or treated with UV and TPA (green) using Phospho-Histone H2A.X (Ser139) antibody HisH2AXS139-1E4 SureLight 488 conjugate.