

12-4221: Phospho-MKK3 (S189)/MKK6 (S207) (Clone: D3) rabbit mAb PE conjugate

Clonality :	Monoclonal
Clone Name :	MKK3S189MKK6S207-D3
Application :	FACS
Reactivity :	Human, Mouse
Conjugate :	PE
Format :	Conjugated
Alternative Name :	Dual specificity mitogen-activated protein kinase kinase 3, MAP kinase kinase 3, MAPKK 3, MAPK/ERK kinase 3, Stress-activated protein kinase kinase 2, SAPK kinase 2, SAPKK2, MAP2K3, MEK3, PRKMK3, SKK2
Isotype :	Rabbit IgG1k
Immunogen Information :	A synthetic phospho-peptide corresponding to residues surrounding Ser189 of human phospho MKK3 and Ser207 of human phospho MKK6.

Description

MKK3 and MKK6 are closely related dual-specificity protein kinases that activate p38 MAP kinase (1-5). Phospho MKK3 and phospho MKK6 both phosphorylate and activate p38. p38 phosphorylation dramatically stimulates its ability to phosphorylate protein substrates such as ATF-2 and Elk-1. MKK3 and MKK6 are both activated by different forms of cellular stress and inflammatory cytokines (4,5). Phospho MKK3 and phospho MKK6 activation occurs through phosphorylation at S189 and T222 on MKK3 (2) and S207 and T211 on MKK6 (4,5).

Product Info

Amount :	10 Tests / 100 Tests
Content :	1X PBS, 0.09% NaN ₃ , 0.2% BSA
Storage condition :	Store at 2-8°C. Avoid repeated freeze and thaw cycles.

Application Note

For flow cytometric staining, the suggested use of this reagent is 5 μ L per million cells or 5 μ L per 100 μ L of staining volume. It is recommended that the reagent be titrated for optimal performance for each application.

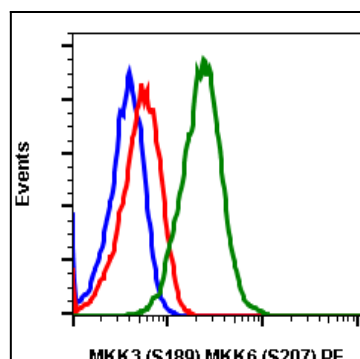


Fig-1: Flow cytometric analysis of HEK293T cells unstained K252a treated cells as negative control (blue) or stained and treated with K252a (red) or treated with UV+TPA (green) using phospho-MKK3(Ser189)/MKK6(Ser207) antibody MKK3S189MKK6S207-D3 PE conjugate.