

12-4291: Phospho-S6-Ribosomal Protein (Ser240/244) (Clone: CD10) rabbit mAb

Clonality :	Monoclonal
Clone Name :	S6RPS240244-CD10
Application :	FACS, WB
Reactivity :	Human, Mouse
Conjugate :	Unconjugated
Format :	Purified
Alternative Name :	40S ribosomal protein S6, Phosphoprotein NP33, Small ribosomal subunit protein eS6, RPS6
Isotype :	Rabbit IgG1k
Immunogen Information :	A synthetic phospho-peptide corresponding to residues surrounding Ser240/244 of human phospho S6 Ribosomal protein

Description

Ribosomal protein S6 kinase is one of two parallel signaling pathways downstream of mTOR, with the other being 4E-BP1. mTOR phosphorylates and activates S6 kinase, which then phosphorylates ribosomal protein S6. The pathway regulates cell growth and cell cycle progression. The identified phosphorylation sites of S6 are Ser235, Ser236, Ser240, Ser244, and Ser247, which are evolutionarily conserved in higher eukaryotes. Ser236 has been proposed as the primary phosphorylation site. Studies using S6 knockin mice, where all five phosphorylation site serine residues are replaced by alanine, have provided extensive detail on S6 function. These studies support the role phosphorylated S6 plays in regulation of cell size, glucose homeostasis, and protein synthesis.

Product Info

Amount :	20 µl / 200 µl
Content :	1X PBS, 0.02% NaN ₃ , 50% Glycerol, 0.1% BSA
Storage condition :	Store at -20°C. Avoid repeated freeze and thaw cycles.

Application Note

1 Âµg/mL - 0.001 Âµg/mL. It is recommended that the reagent be titrated for optimal performance for each application. See product image legends for additional information.(0.5mg/ml, more than 200 western blots)

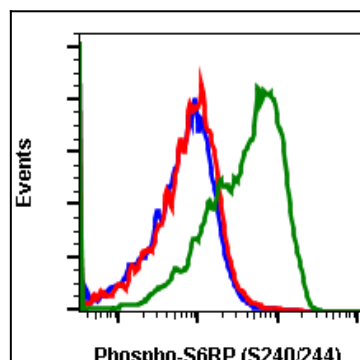


Fig-1: Flow cytometric analysis of K562 cells, unstained untreated cells as negative control (blue) or stained untreated (red) or treated with EGF A (green) using Phospho-S6 ribosomal protein (Ser240/Ser244) antibody S6S240S244-CD10 at 0.1 µg/mL.

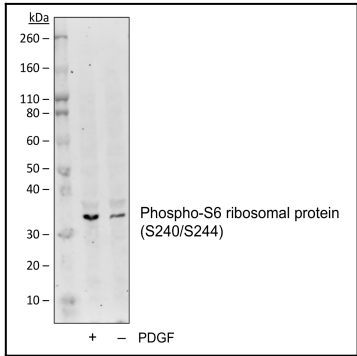


Fig 2 : Western blot analysis of NIH3T3 cells untreated or treated with PDGF using S6-Ribosomal Protein (S240/244) antibody S6RPS240/S244-CD10 at 10 ng/mL.

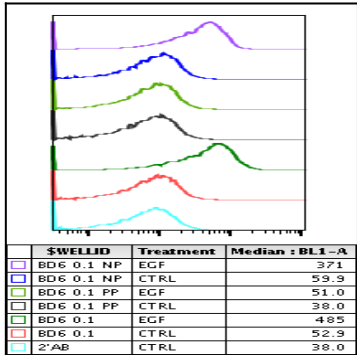


Fig-3: Flow cytometric analysis of K562 cells, unstained untreated cells as negative control (light blue) or stained untreated (red) or treated with EGF (green) or stained untreated and blocked with non-phosphopeptide (blue) or phosphor-peptide (black) or stained treated and blocked with non-phospho-peptide (violet) or treated and blocked with phosphor-peptide (light green) using Phospho-S6 ribosomal protein (Ser240/Ser244) antibody S6S240S244-CD10 at 0.1 µg/mL.

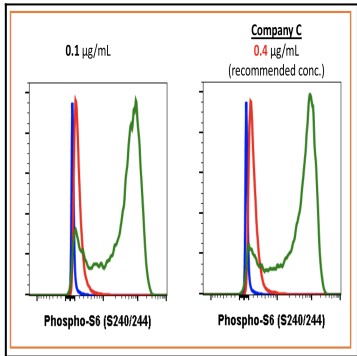


Fig-4: Flow cytometric analysis of K562 cells secondary antibody only negative control (blue) or untreated (red) or treated with EGF + pervanadate (green) using 0.1µg/mL Phospho-S6 ribosomal protein (Ser240/244) antibody S6S240S244-CD10 or Company C antibody at 0.4µg/mL (manufacturer's recommended concentration).