

12-4329: Phospho-MCM2 (Ser139) (Clone: B12) rabbit mAb

Clonality :	Monoclonal
Clone Name :	MCM2S139-B12
Application :	FACS, WB
Reactivity :	Human, Mouse, Rat
Conjugate :	Unconjugated
Format :	Purified
Alternative Name :	DNA replication licensing factor MCM2, Minichromosome maintenance protein 2 homolog, Nuclear protein BM28, CCNL1, CDCL1, KIAA0030
Isotype :	Rabbit IgG1k
Immunogen Information :	A synthetic phospho-peptide corresponding to residues surrounding Ser139 of human phospho MCM2

Description

The members of minichromosome maintenance (Mcm) protein family 2-7 were originally identified as a group of proteins essential for DNA replication (chromosomal maintenance (1,2). They share common sequence homology to each other in their nucleotide-binding domains and are distinct subgroup of the large AAA ATPase family, which are required for the initiation and elongation of DNA replication. It has been reported that Cdc7/Dbf4 phosphorylates MCM2 during G1/S cell cycle which coincides with the initiation of DNA replication (3,4)

Product Info

Amount :	20 µl / 200 µl
Content :	1X PBS, 0.02% NaN ₃ , 50% Glycerol, 0.1% BSA
Storage condition :	Store at -20°C. Avoid repeated freeze and thaw cycles.

Application Note

1 µg/mL - 0.001 µg/mL. It is recommended that the reagent be titrated for optimal performance for each application. See product image legends for additional information.(0.5mg/ml, more than 200 western blots)

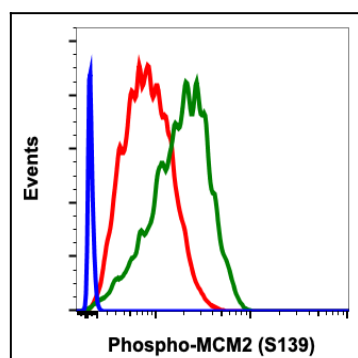


Fig-1: Flow cytometric analysis of C6 cells, secondary antibody only negative control (blue) or untreated (red) or treated with staurosporine (green) using Phospho-MCM2 (Ser139) antibody MCM2S139-B12 at 0.01 µg/mL.

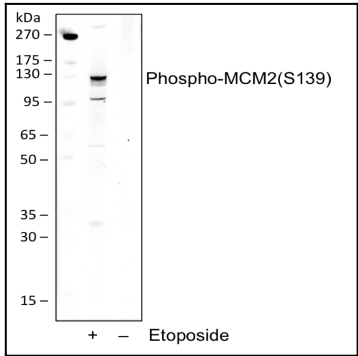


Fig 2 : Western blot analysis of L929 cell extract untreated or treated with 25uM etoposide using Phospho-MCM2 (Ser139) antibody MCM2S139-B12 at 0.05 µg/mL.

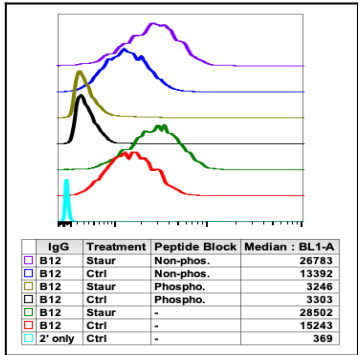


Fig-3: Peptide blocking flow cytometric analysis of C6 cells secondary antibody only negative control (light blue) or untreated (red) or treated with staurosporine (green) or untreated and blocked with phospho-peptide (black) or treated and blocked with phospho peptide (gold) or untreated and blocked with non-phospho peptide (dark blue) or treated and blocked with non-phospho peptide (purple) using Phospho-MCM2 (Ser139) antibody MCM2S139-B12 at 0.1 µg/mL.

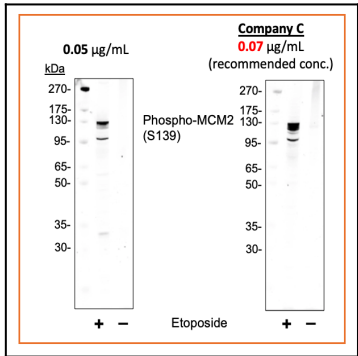


Fig-4: Western blot analysis of L929 cell extract untreated or treated with etoposide using 0.05 µg/mL Phospho-MCM2 (Ser139) antibody MCM2S139-B12. Company C antibody at 0.07 µg/mL (manufacturer's recommended concentration) developed using the same exposure.

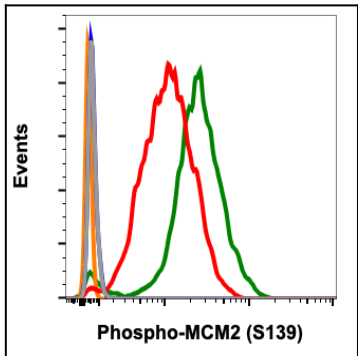


Fig-5: Flow cytometric analysis of A431 cells, secondary antibody only negative control (blue), or untreated (grey) or treated with staurosporine (orange) using 0.01 µg/mL isotype control or untreated (red) or treated (green) using Phospho-MCM2 (Ser139) antibody MCM2S139-B12 at 0.01 µg/mL.