

32-190049: IL-1beta (human) (Recombinant) (untagged)

Application : Functional Assay
Reactivity : Human
Alternative Name : Interleukin-1beta; IL-1F2

Description

Source :E. coli

Specific Binds to human IL-1R.IL-1beta is produced by activated macrophages. IL-1beta stimulates thymocyte proliferation by inducing IL-2 release, B-cell maturation and proliferation, and fibroblast growth factor activity. IL-1beta belongs to the IL-1 family of proteins that are involved in the inflammatory response. IL-1beta in most situations requires the inflammasome complex to be cleaved and secreted.

Product Info

Amount : 10 µg
Purification : >=95% (SDS-PAGE)
Content : Reconstitute with 100µl sterile water.0.1mg/ml after reconstitution.
Lyophilized. Contains PBS.
Short Term Storage +4°C ; Long Term Storage -20°C ;After reconstitution, prepare aliquots and store at -20°C.
Storage condition : Avoid freeze/thaw cycles.
PBS containing at least 0. 1% BSA should be used for further dilutions. Stable for at least 6 months after receipt when stored at -20°C.
Working aliquots are stable for up to 3 months when stored at -20°C.
Amino Acid : Human IL-1beta (aa 117-269) is untagged.

Application Note

Biological Activity: Activates the NF-kB with an ED50 of <5ng/ml.
Endotoxin Content <0.1EU/µg purified protein (LAL test; Lonza).

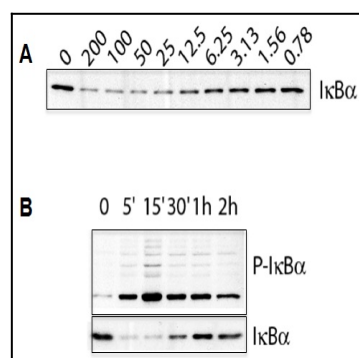


Figure 1: Activation of NF-kB in HeLa cells with IL-1 beta (human) (rec.) (untagged) . Method: Cell extracts from Hela cells treated with different concentrations of IL-1 beta (human) (rec.)(untagged) for 30 min (A) or with 50ng/ml of IL-1 beta (human) (rec.) (untagged) for different time points (B) were separated by SDS-PAGE under reducing conditions, transferred to nitrocellulose and incubated with anti-Ikb or anti-phospho Ikb (1/1000) (CST) to measure Ikb degradation (A) or Ikb phosphorylation and degradation (B).