

## 21-1018: SARS-CoV-2 (2019-nCoV) Spike S1, Southern California mutant (S13I / W152C / L452R) His Tag Protein

**Application :** ELISA,WB

### Description

Source: SARS-CoV-2 (2019-nCoV) Spike S1, Southern California Mutant (S13I / W152C / L452R) His Protein was expressed in CHO-K1. The spike protein (S1) of coronavirus (CoV2) attaches the virus to its cellular receptor, angiotensin-converting enzyme 2 (ACE2). A defined receptor-binding domain (RBD) on S mediates this interaction. The S protein plays key parts in the induction of neutralizing-antibody and T-cell responses, as well as protective immunity.

### Product Info

**Amount :** 50 µg / 100 µg

**Purification :** >95% by SDS-PAGE.

**Content :** PBS and 10% Glycerol.

**Storage condition :** SARS-CoV-2 Spike S1 (S13I / W152C / L452R) His Protein is shipped on ice packs. Upon arrival, Store at -20°C. Do not freeze-thaw multiple times.

**Amino Acid :** The target protein is expressed with sequence (AA 14-683) of SARS-CoV-2/COVID-19 Spike S1 sequence with mutation at 614aa fused with a 10xHis tag in C-Terminal.

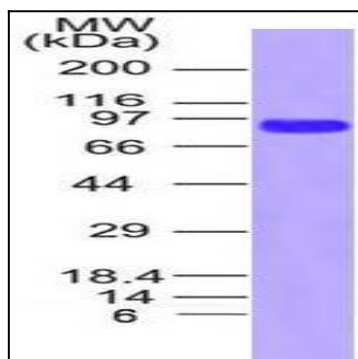


Figure-1: Recombinant SARS-CoV-2 Spike S1 S13I / W152C / L452R mutant protein was run on a 4-20% SDS-PAGE gel followed by Coomassie blue staining.

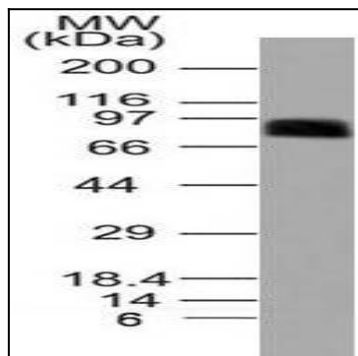


Figure-2: Western blot analysis of SARS-CoV-2 Spike S1 S13I / W152C / L452R mutant protein. Anti-Spike S1 antibody was used in western Blot analysis.

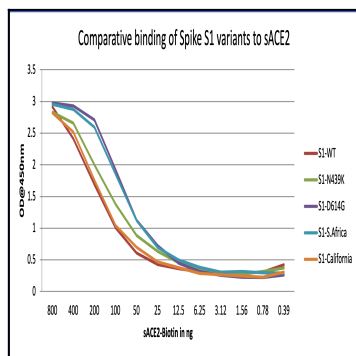


Figure-3: Comparative binding of Spike S1 variants to sACE2: Wells of a 96-well microtiter plate were coated with 100 ng in duplicates each of S1-WT (Cat# 21-1008), S1-N439K (Cat# 21-1012), S1-D614G (Cat# 21-1009), S1-South Africa (Cat# 21-1017), and S1-Southern California (Cat# 21-1018). Binding to sACE2 was determined by adding different concentrations of biotinylated-sACE2 (Cat# 21-1006).