

36-1661: Monoclonal Antibody to S100A1 (Astrocyte Marker)(Clone : 4C4.9)

Clonality :	Monoclonal
Clone Name :	4C4.9
Application :	IF,IHC
Reactivity :	Human
Gene :	S100A1
Gene ID :	6271
Uniprot ID :	P23297
Format :	Purified
Alternative Name :	S100A1,S100A
Isotype :	Mouse IgG1, kappa
Immunogen Information :	Purified bovine brain S100 protein

Description

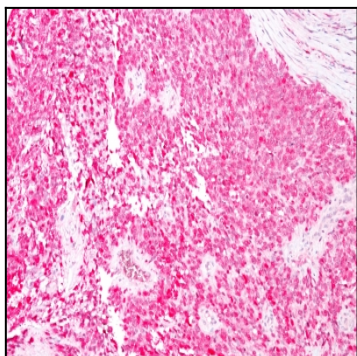
S100 belongs to the family of calcium binding proteins. S100A and S100B proteins are two members of the S100 family. S100A is composed of an alpha and beta chain whereas S100B is composed of two beta chains. S-100 protein has been found in normal melanocytes, Langerhans cells, histiocytes, chondrocytes, lipocytes, skeletal and cardiac muscle, Schwann cells, epithelial and myoepithelial cells of the breast, salivary and sweat glands, as well as in glial cells. Neoplasms derived from these cells also express S-100 protein, albeit non-uniformly. A large number of well-differentiated tumors of the salivary gland, adipose and cartilaginous tissue, and Schwann cell-derived tumors express S-100 protein. Almost all malignant melanomas and cases of histiocytosis X are positive for S-100 protein. Despite the fact that S-100 protein is an ubiquitous substance, its demonstration is of great value in the identification of several neoplasms, particularly melanomas and their metastases.

Product Info

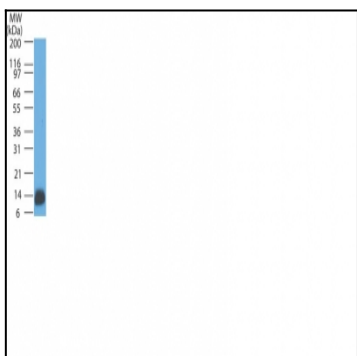
Amount :	100 µg
Purification :	Affinity Chromatography
Content :	100 µg in 500 µl PBS containing 0.05% BSA and 0.05% sodium azide. Sodium azide is highly toxic.
Storage condition :	Store the antibody at 4°C; stable for 6 months. For long-term storage; store at -20°C. Avoid repeated freeze and thaw cycles.

Application Note

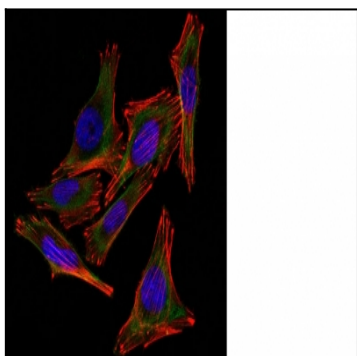
Immunofluorescence (1-2ug/ml); ,Immunohistology (Formalin-fixed) (1-2ug/ml for 30 minutes at RT),(Staining of formalin-fixed tissues requires boiling tissue sections in 10mM citrate buffer, pH 6.0, for 10-20 min followed by cooling at RT for 20 minutes),



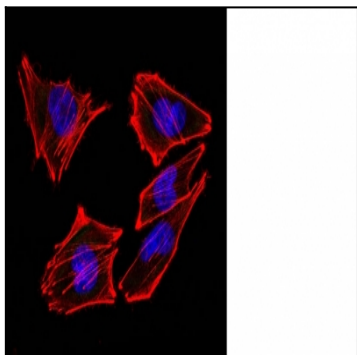
Formalin--paraformaldehyde human Melanoma stained with S100A1 Monoclonal Antibody (4C4.9) (AEC Chromogen)



Western Blot of human Cerebellum Lysate using S100A1 Monoclonal Antibody (4C4.9).



Confocal Immunofluorescent analysis of A2058 cells using AF488-labeled S100A1 Monoclonal Antibody (4C4.9) (Green).



Confocal Immunofluorescent analysis of A2058 cells using AF488-labeled Isotype Control Monoclonal Antibody (IgG2a) (Green). F-actin filaments were labeled with DyLight 554 Phalloidin (red). DAPI was used to stain the cell nuclei (blue). (Negative Control)