

36-1681: Monoclonal Antibody to gp100 / Melanosome / PMEL17 / SILV (Melanoma Marker)(Clone : SPM286)

Clonality :	Monoclonal
Clone Name :	SPM286
Application :	FACS,IF,IHC
Reactivity :	Human
Gene :	PMEL
Gene ID :	6490
Uniprot ID :	P40967
Format :	Purified
Alternative Name :	PMEL,D12S53E,PMEL17,SILV
Isotype :	Mouse IgG2b, kappa
Immunogen Information :	Membranes from a human melanoma metastasis

Description

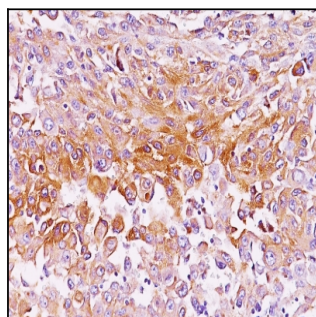
By immunohistochemistry, it specifically recognizes a protein in melanocytes and melanomas. This MAb reacts with junctional and blue nevus cells and variably with fetal and neonatal melanocytes. Intradermal nevi, normal adult melanocytes, and non-melanocytic cells are negative. It does not stain tumor cells of epithelial, lymphoid, glial, or mesenchymal origin. This Mab labels formalin-fixed, paraffin-embedded melanomas and other tumors showing melanocytic differentiation.

Product Info

Amount :	100 µg
Purification :	Affinity Chromatography
Content :	100 µg in 500 µl PBS containing 0.05% BSA and 0.05% sodium azide. Sodium azide is highly toxic.
Storage condition :	Store the antibody at 4°C; stable for 6 months. For long-term storage; store at -20°C. Avoid repeated freeze and thaw cycles.

Application Note

Flow Cytometry (1-2ug/million cells); Immunofluorescence (1-2ug/ml); Immunohistochemistry (Formalin-fixed) (1-2ug/ml for 30 minutes at RT)(Staining of formalin-fixed tissues requires heating tissue sections in 10mM Tris with 1mM EDTA, pH 9.0, for 45 min at 95°C followed by cooling at RT for 20 minutes);



Formalin-fixed, paraffin-embedded human Melanoma stained with gp100 Monoclonal Antibody (SPM286).