

12-9008: Anti-CS1 antibody(DM11), Rabbit mAb

Clonality :	Monoclonal
Clone Name :	DM11
Application :	ELISA
Reactivity :	Human
Alternative Name :	SLAMF7, 19A, CD319, CRACC, CS1
Isotype :	Rabbit IgG
Immunogen Information :	Recombinant human CS1 (Ser23-Met226) produced by using human HEK293 cells

Description

Self-ligand receptor of the signaling lymphocytic activation molecule (SLAM) family. SLAM receptors triggered by homo- or heterotypic cell-cell interactions are modulating the activation and differentiation of a wide variety of immune cells and thus are involved in the regulation and interconnection of both innate and adaptive immune response. Activities are controlled by presence or absence of small cytoplasmic adapter proteins, SH2D1A/SAP and/or SH2D1B/EAT-2. Isoform 1 mediates NK cell activation through a SH2D1A-independent extracellular signal-regulated ERK-mediated pathway. Positively regulates NK cell functions by a mechanism dependent on phosphorylated SH2D1B. Downstream signaling implicates PLCG1, PLCG2 and PI3K. In addition to heterotypic NK cells-target cells interactions also homotypic interactions between NK cells may contribute to activation. However, in the absence of SH2D1B, inhibits NK cell function. Acts also inhibitory in T-cells (By similarity). May play a role in lymphocyte adhesion. In LPS-activated monocytes negatively regulates production of proinflammatory cytokines.

Product Info

Amount :	100 µg
Purification :	Purified from cell culture supernatant by affinity chromatography
Content :	Preservative: 0.1% Proline 300 Constituents: 50% Glycerol; PBS, pH 7.4; 0.1% BSA Not Sterile
Storage condition :	Store at -20°C for 12 months (Avoid repeated freezing and thawing)

Application Note

Recommended Dilutions FACS 1/100

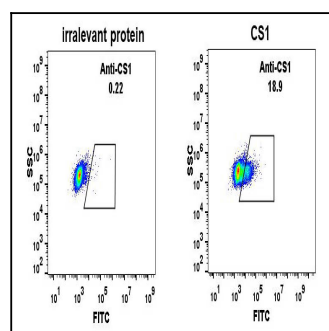


Figure 1. Expi 293 cell line transfected with irrelevant protein (left) and human CS1 (right) were surface stained with Rabbit anti-CS1 monoclonal antibody 15µg/ml (clone: DM11) followed by Alexa 488-conjugated anti-rabbit IgG secondary antibody.

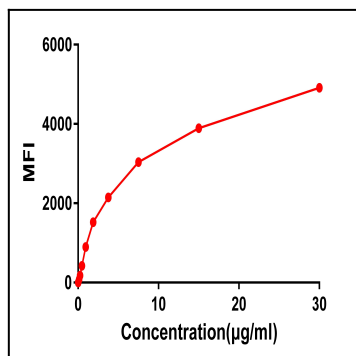


Figure 2. FACS data of serially titrated Rabbit anti-CS1 monoclonal antibody (clone: DM11) on Raji cells. The Y-axis represents the mean fluorescence intensity (MFI) while the X-axis represents the concentration of IgG used.

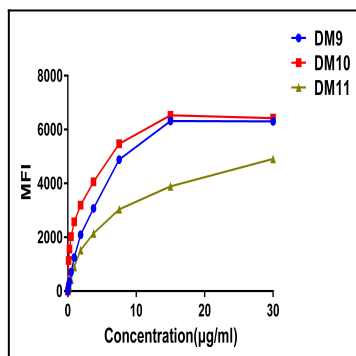


Figure 3. Affinity ranking of different Rabbit anti-CS1 mAb clones by titration of different concentration onto Raji cells. The Y-axis represents the mean fluorescence intensity (MFI) while the X-axis represents the concentration of IgG used.

Figure 4. Phylogenetic analysis of amino acid sequence of different Rabbit Anti-CS1 mAb clones. A) Heavy chain and B) Light chain.