

12-9010: Anti-CD22 antibody(DM13), Rabbit mAb

Clonality :	Monoclonal
Clone Name :	DM13
Application :	ELISA, WB
Reactivity :	Human
Alternative Name :	SIGLEC-2, SIGLEC2
Isotype :	Rabbit IgG
Immunogen Information :	Recombinant human CD22 (Asp20-Arg687) produced by using human HEK293 cells

Description

CD22 (CD22 Molecule) is a Protein Coding gene. Diseases associated with CD22 include Refractory Hematologic Cancer and Hairy Cell Leukemia. Among its related pathways are Downstream signaling events of B Cell Receptor (BCR) and Hematopoietic cell lineage. Gene Ontology (GO) annotations related to this gene include carbohydrate binding. An important paralog of this gene is SIGLEC2.

Product Info

Amount :	100 µg
Purification :	Purified from cell culture supernatant by affinity chromatography
Content :	Preservative: 0.1% Procline 300 Constituents: 50% Glycerol; PBS, pH 7.4; 0.1% BSA Not Sterile
Storage condition :	Store at -20°C for 12 months (Avoid repeated freezing and thawing)

Application Note

Recommended Dilutions FACS 1/100

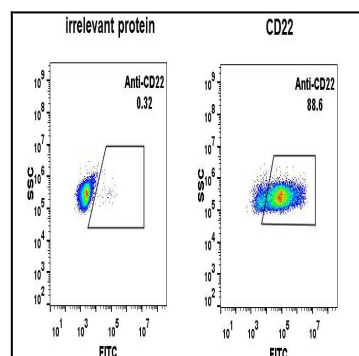


Figure 1. Expi 293 cell line transfected with irrelevant protein (left) and human CD22 (right) were surface stained with Rabbit anti- CD22 monoclonal antibody 1µg/ml (clone: DM13) followed by Alexa 488-conjugated anti-rabbit IgG secondary antibody.

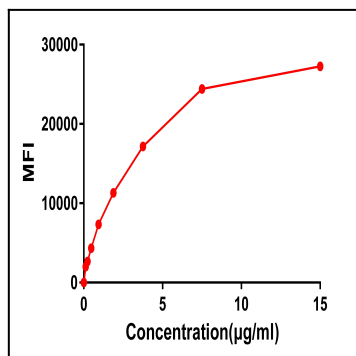


Figure 2. FACS data of serially titrated Rabbit anti-CD22 monoclonal antibody (clone: DM13) on Raji cells. The Y-axis represents the mean fluorescence intensity (MFI) while the X-axis represents the concentration of IgG used.

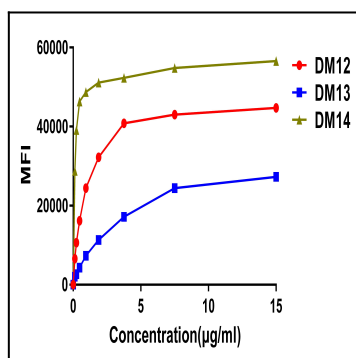


Figure 3. Affinity ranking of different Rabbit anti-CD22 mAb clones by titration of different concentration onto Raji cells. The Y-axis represents the mean fluorescence intensity (MFI) while the X-axis represents the concentration of IgG used.

Figure 4. Phylogenetic analysis of amino acid sequence of different Rabbit Anti-CD22 mAb clones. A) Heavy chain and B) Light chain.