

12-9016: Anti-BCMA antibody(DM16), Rabbit mAb(Discontinued)

Clonality :	Monoclonal
Clone Name :	DM16
Application :	ELISA
Reactivity :	Human
Alternative Name :	TNFRSF17, CD269, BCM, BCMA
Isotype :	Rabbit IgG
Immunogen Information :	Recombinant human BCMA (Met1-Ala54) produced by using human HEK293 cells

Description

The protein encoded by this gene is a member of the TNF-receptor superfamily. This receptor is preferentially expressed in mature B lymphocytes, and may be important for B cell development and autoimmune response. This receptor has been shown to specifically bind to the tumor necrosis factor (ligand) superfamily, member 13b (TNFSF13B/TALL-1/BAFF), and to lead to NF-kappaB and MAPK8/JNK activation. This receptor also binds to various TRAF family members, and thus may transduce signals for cell survival and proliferation.

Product Info

Amount :	100 µg
Purification :	Purified from cell culture supernatant by affinity chromatography
Content :	Preservative: 0.1% Procline 300 Constituents: 50% Glycerol; PBS, pH 7.4; 0.1% BSA Not Sterile
Storage condition :	Store at -20°C for 12 months (Avoid repeated freezing and thawing)

Application Note

Recommended Dilutions FACS 1/100; IP 1/30

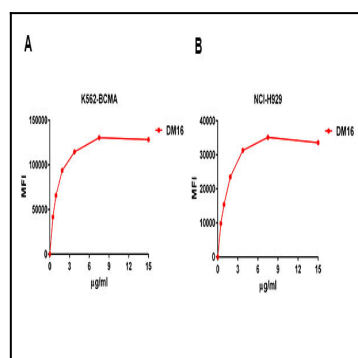


Figure 1. Detection of BCMA/ TNFRSF 17 in K562-BCMA (K562 cells transduced with gene for full length BCMA) Human Cell Line or NCI-H929 Human Cell Line with Rabbit Anti-Human BCMA/TNFRSF 17 Antigen Affinity-purified monoclonal antibody (clone: DM16) by FACS.

