

12-9031: Anti-SARS-CoV-2 Spike antibody(DM41), Rabbit mAb

Clonality :	Monoclonal
Clone Name :	DM41
Application :	ELISA
Alternative Name :	SARS-CoV-2 Spike S2
Isotype :	Rabbit IgG
Immunogen Information :	Recombinant SARS-CoV-2 Spike S2 protein (686-1213) produced by using E. coli

Description

SARS-CoV-2 (Severe Acute Respiratory Syndrome Coronavirus 2) also known as Covid19 (2019 Novel Coronavirus) is a virus that causes illnesses ranging from the common cold to severe diseases. The spike protein is a type I transmembrane protein containing two subunits, S1 and S2. S1 mainly contains a receptor binding domain (RBD), which accounts for recognizing the cell surface receptor, ACE2. S2 contains basic elements needed for the membrane fusion. Recent publications indicate that S1-RBD domain can induce virus neutralizing-antibody and T cell response.

Product Info

Amount :	100 µg
Purification :	Purified from cell culture supernatant by affinity chromatography
Content :	Preservative: 0.1% Procline 300 Constituents: 50% Glycerol; PBS,pH 7.4; 0.1% BSA Not Sterile
Storage condition :	Store at -20°C for 12 months (Avoid repeated freezing and thawing)

Application Note

Recommended Dilutions ELISA 1/5000-10000

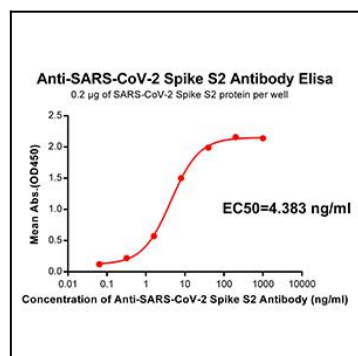


Figure 1. Elisa plate pre-coated by 2 µg/ml(100µl/well) SARS-CoV-2 Spike S2 protein can bind Rabbit Anti-SARS-CoV-2 Spike S2 monoclonal antibody (clone:DM41) in a linear range of 0.32-40 ng/ml.