

12-9044: Anti-CD27 antibody(DM57), Rabbit mAb

| | |
|--------------------------------|--|
| Clonality : | Monoclonal |
| Clone Name : | DM57 |
| Application : | ELISA,FACS |
| Reactivity : | Human |
| Alternative Name : | CD27, TNFRSF7, S152, T14, Tp55 |
| Isotype : | Rabbit IgG |
| Immunogen Information : | Recombinant human CD27 (Ala20-Arg191) produced by using human HEK293 cells |

Description

The protein encoded by this gene is a member of the TNF-receptor superfamily. This receptor is required for generation and long-term maintenance of T cell immunity. It binds to ligand CD70, and plays a key role in regulating B-cell activation and immunoglobulin synthesis. This receptor transduces signals that lead to the activation of NF-kappaB and MAPK8/JNK. Adaptor proteins TRAF2 and TRAF5 have been shown to mediate the signaling process of this receptor. CD27-binding protein (SIVA), a proapoptotic protein, can bind to this receptor and is thought to play an important role in the apoptosis induced by this receptor.

Product Info

| | |
|----------------------------|--|
| Amount : | 100 µg |
| Purification : | Purified from cell culture supernatant by affinity chromatography |
| Content : | Preservative: 0.1% Procline 300 Constituents: 50% Glycerol; PBS,pH 7.4; 0.1% BSA Not Sterile |
| Storage condition : | Store at -20°C for 12 months (Avoid repeated freezing and thawing) |

Application Note

Recommended Dilutions ELISA 1/5000-10000;FACS 1/100

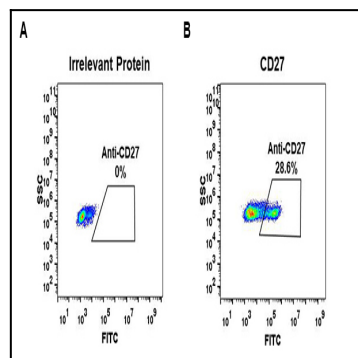


Figure 1. Expi 293 cell line transfected with irrelevant protein (A) and human CD27 (B) were surface stained with Rabbit anti-CD27 monoclonal antibody 1µg/ml (clone: DM57) followed by Alexa 488-conjugated anti-rabbit IgG secondary antibody.

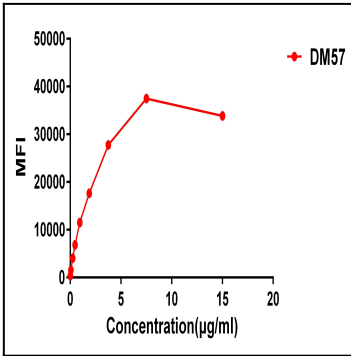


Figure 2. FACS data of serially titrated Rabbit anti-CD27 monoclonal antibody (clone: DM57) on Raji cells. The Y-axis represents the mean fluorescence intensity (MFI) while the X-axis represents the concentration of IgG used.

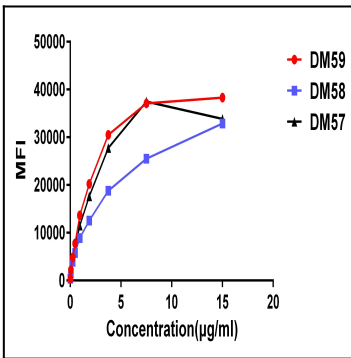


Figure 3. Affinity ranking of different Rabbit anti-CD27 mAb clones by titration of different concentration onto Raji cells. The Y-axis represents the mean fluorescence intensity (MFI) while the X-axis represents the concentration of IgG used.