

12-9048: Anti-GPRC5D antibody(DM61), Rabbit mAb

Clonality :	Monoclonal
Clone Name :	DM61
Application :	ELISA,FACS
Reactivity :	Human
Alternative Name :	GPRC5D
Isotype :	Rabbit IgG
Immunogen Information :	Recombinant human GPRC5D (Met1-Glu27) produced by using human HEK293 cells

Description

The protein encoded by this gene is a member of the G protein-coupled receptor family; however, the specific function of this gene has not yet been determined.

Product Info

Amount :	100 µg
Purification :	Purified from cell culture supernatant by affinity chromatography
Content :	Preservative: 0.1% Procline 300 Constituents: 50% Glycerol; PBS,pH 7.4; 0.1% BSA Not Sterile
Storage condition :	Store at -20°C for 12 months (Avoid repeated freezing and thawing)

Application Note

Recommended Dilutions ELISA 1/5000-10000;FACS 1/100

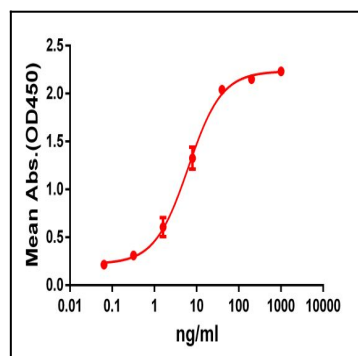


Figure 1. ELISA plate pre-coated by 2 µg/ml (100 µl/well) Human GPRC5D protein, hFc-His tagged protein (PME100066) can bind Rabbit anti-GPRC5D monoclonal antibody (clone: DM61) in a linear range of 1-100 ng/ml.

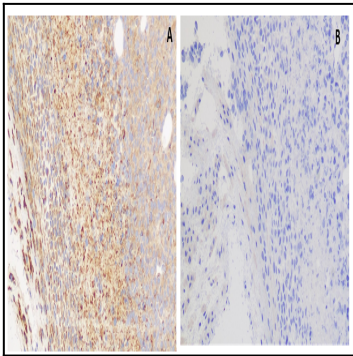


Figure 2. IHC staining of H929 cells A. with rabbit anti-GPRC5D mAb at 5.9 ug/ml. B. with another anti-GPRC5D mAb at 8.8 ug/ml. 12-9048 can specifically react with GPRC5D in IHC application.