

## 32-17002: Recombinant human CS1 protein with C-terminal human Fc and 6 $\times$ His tag

**Alternative Name :** SLAMF7, CD319, CS1, CRACC, 19A, FOAP-12

### Description

Expression Host : HEK293

The protein has a predicted molecular mass of 70 kDa after removal of the signal peptide.

SLAM family member 7 (SLAMF7) is also known as CD2-like receptor-activating cytotoxic cells (CRACC), Membrane protein FOAP-12, CD antigen CD319, Novel Ly9, Protein 19A, which is a single-pass type I membrane protein and a member of the CD2 family of cell surface receptors. SLAMF7 is expressed in spleen, lymph node, peripheral blood leukocytes, bone marrow, small intestine, stomach, appendix, lung and trachea. Isoform 1 of SLAMF7 mediates NK cell activation through a SH2D1A-independent extracellular signal-regulated ERK-mediated pathway. May play a role in lymphocyte adhesion. Isoform 3 of SLAMF7 does not mediate any NK cell activation.

### Product Info

<b>Amount :</b>	50 $\mu$ g
<b>Purification :</b>	The purity of the protein is greater than 95% as determined by SDS-PAGE and Coomassie blue staining.
<b>Content :</b>	Lyophilized from sterile PBS, pH 7.4. Normally 5 % - 8 % trehalose is added as protectants before lyophilization.
<b>Storage condition :</b>	Store at -80°C for 12 months (Avoid repeated freezing and thawing)

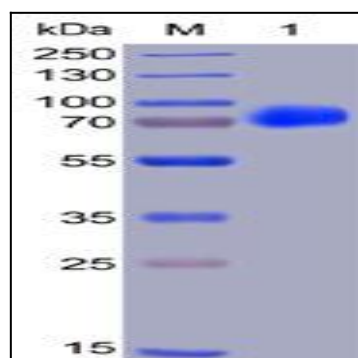


Figure 1. Human CS1, hFc-His Tag on SDS-PAGE under reducing condition.

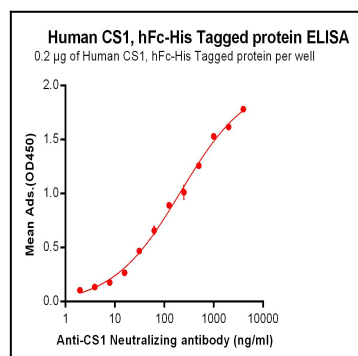


Figure 2. ELISA plate pre-coated by 2  $\mu$ g/ml (100  $\mu$ l/well) Human CS1, hFc-His tagged protein can bind Anti-CS1 Neutralizing antibody in a linear range of 7.81-210.7 ng/ml.