

## 32-17024: Recombinant human SLAMF1 protein with C-terminal mouse Fc and 6Å—His tag

**Alternative Name :** SLAMF1, CD150, CDw150, SLAM, IPO-3

### Description

Expression Host : HEK293

The protein has a predicted molecular mass of 51.8 kDa after removal of the signal peptide.

SLAMF1 (Signaling Lymphocytic Activation Molecule Family Member 1) is a Protein Coding gene. Diseases associated with SLAMF1 include Measles and Subacute Sclerosing Panencephalitis. Among its related pathways are Dendritic Cells Developmental Lineage Pathway and T Cell Co-Signaling Pathway: Ligand-Receptor Interactions. Gene Ontology (GO) annotations related to this gene include antigen binding. An important paralog of this gene is LY9.

### Product Info

<b>Amount :</b>	50 µg
<b>Purification :</b>	The purity of the protein is greater than 95% as determined by SDS-PAGE and Coomassie blue staining.
<b>Content :</b>	Lyophilized from sterile PBS, pH 7.4. Normally 5 % - 8 % trehalose is added as protectants before lyophilization.
<b>Storage condition :</b>	Store at -80°C for 12 months (Avoid repeated freezing and thawing)

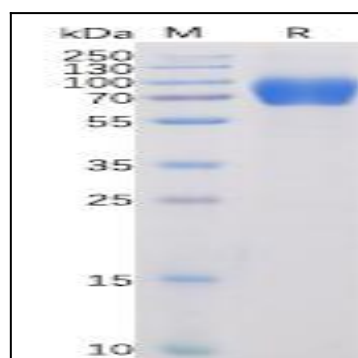


Figure 1. Human SLAMF1 Protein, mFc-His Tag on SDS-PAGE under reducing condition.