

## 32-17025: Recombinant human PD-1 protein with C-terminal mouse Fc and 6 $\times$ His tag

**Alternative Name :** PDCD1, PD1, CD279, SLEB2

### Description

Expression Host : HEK293

The protein has a predicted molecular mass of 43.5 kDa after removal of the signal peptide.

This protein is expressed in pro-B-cells and is thought to play a role in their differentiation. In mice, expression of this gene is induced in the thymus when anti-CD3 antibodies are injected and large numbers of thymocytes undergo apoptosis. Mice deficient for this gene bred on a BALB/c developed dilated cardiomyopathy and died from congestive heart failure. These studies suggest that this gene product may also be important in T cell function and contribute to the prevention of autoimmune diseases.

### Product Info

<b>Amount :</b>	50 $\mu$ g
<b>Purification :</b>	The purity of the protein is greater than 95% as determined by SDS-PAGE and Coomassie blue staining.
<b>Content :</b>	Lyophilized from sterile PBS, pH 7.4. Normally 5 % - 8 % trehalose is added as protectants before lyophilization.
<b>Storage condition :</b>	Store at -80°C for 12 months (Avoid repeated freezing and thawing)

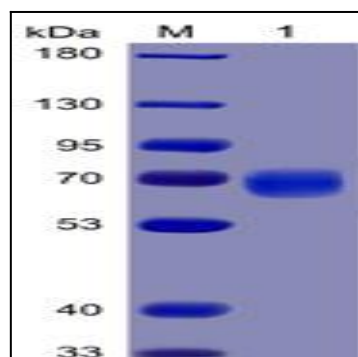


Figure 1. Human PD-1 Protein, mFc-His Tag on SDS-PAGE under reducing condition.

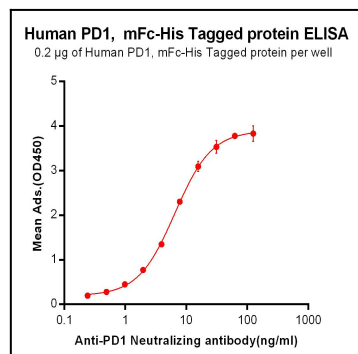


Figure 2. ELISA plate pre-coated by 2  $\mu$ g/ml (100  $\mu$ l/well) Human PD1, mFc-His tagged protein (PME100025) can bind Anti-PD-1 Neutralizing antibody in a linear range of 0.24-6.49 ng/ml.