

32-17053: Recombinant human EPCAM protein with C-terminal 6 \times His tag

Alternative Name : EPCAM, TACSTD1, TROP1, CD326, DIAR5, EGP2, EGP314, EGP40, ESA, GA733-2, HNPCC8, HNPCC-8, KS1/4, KSA, M4S1, MIC18, MK1

Description

Expression Host : HEK293

The protein has a predicted molecular mass of 28.2 kDa after removal of the signal peptide.

This gene encodes a carcinoma-associated antigen and is a member of a family that includes at least two type I membrane proteins. This antigen is expressed on most normal epithelial cells and gastrointestinal carcinomas and functions as a homotypic calcium-independent cell adhesion molecule. The antigen is being used as a target for immunotherapy treatment of human carcinomas. Mutations in this gene result in congenital tufting enteropathy.

Product Info

Amount :	50 μ g
Purification :	The purity of the protein is greater than 95% as determined by SDS-PAGE and Coomassie blue staining.
Content :	Lyophilized from sterile PBS, pH 7.4. Normally 5 % - 8 % trehalose is added as protectants before lyophilization.
Storage condition :	Store at -80°C for 12 months (Avoid repeated freezing and thawing)

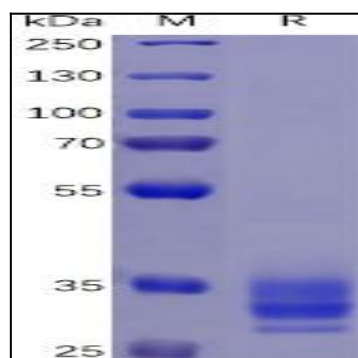


Figure 1. Human EPCAM Protein, His Tag on SDS-PAGE under reducing condition.